



Charles M. Schulz – Sonoma County Airport
2290 Airport Boulevard
Santa Rosa, CA 95403
Ph: 707.565.7243

www.sonomacountyairport.org

Charles M. Schulz – Sonoma County Airport (STS)

Aircraft Noise Monthly Report

April 2024



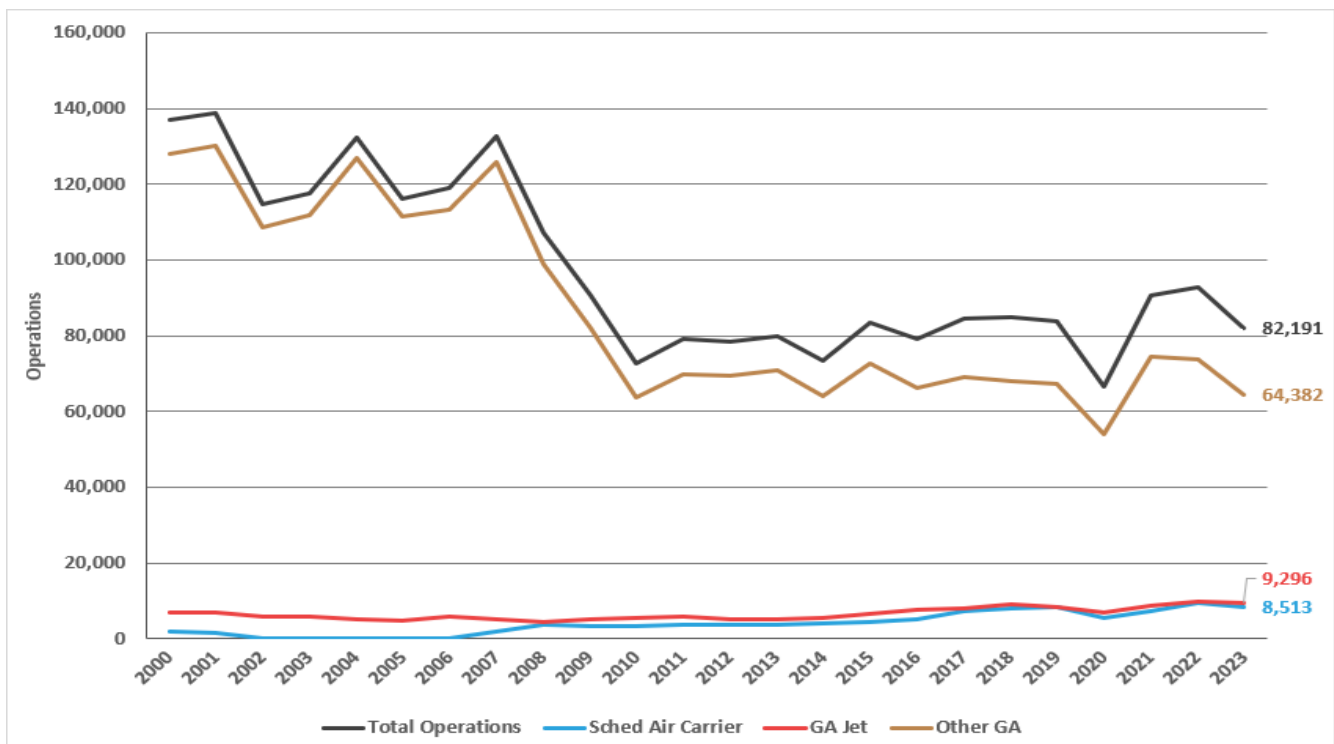
About the Charles M. Schulz – Sonoma County Airport and Noise Abatement

The Airport operates as a self-supporting Enterprise Fund within the Department of Transportation and Public Works and under the jurisdiction of the Federal Aviation Administration (FAA). STS is both a general aviation facility, serving private planes and business jets, and is a commercial airline facility with scheduled air service. STS generates over \$1,300,000 annually in tax revenues, via its users, for Sonoma County and County School Districts.

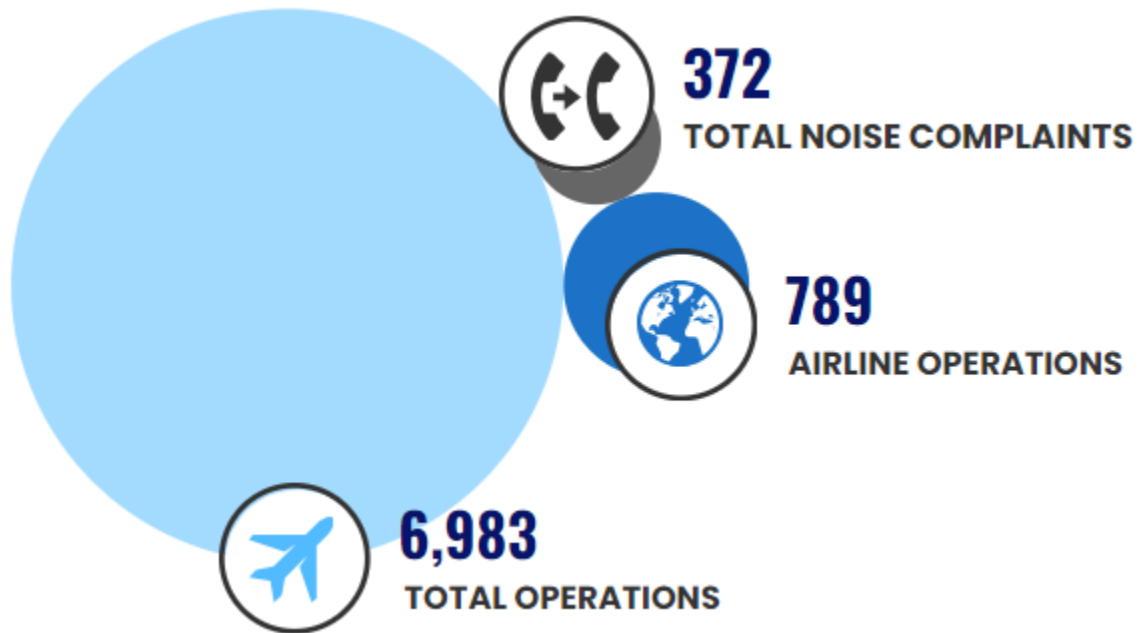
The Airport’s current Noise Abatement Program was established in 1988. STS also works within FAA guidelines, to encourage pilots and airlines to fly with consideration of our neighbors in mind. The Airport makes every effort to promote flight procedures that minimize aircraft noise while always maintaining safety as the highest priority. It is the FAA’s sole responsibility to develop air traffic rules, assign the use of airspace, and control air traffic.

STS is working with our Aviation Commission and a community advisory group to re-write the Airport’s Noise Abatement Guide and associated procedures (to be released in the future). Using flight-tracking and noise management software, the Airport also provides monthly complaint reports to pilots and to airlines so that operators can use real data to update flight practices and fly friendly. As more data becomes available to STS staff, additional analysis is performed and included in monthly and annual reports.

STS Historical Operations



This Month's Operations



This Month's Noise Complaints At-A-Glance

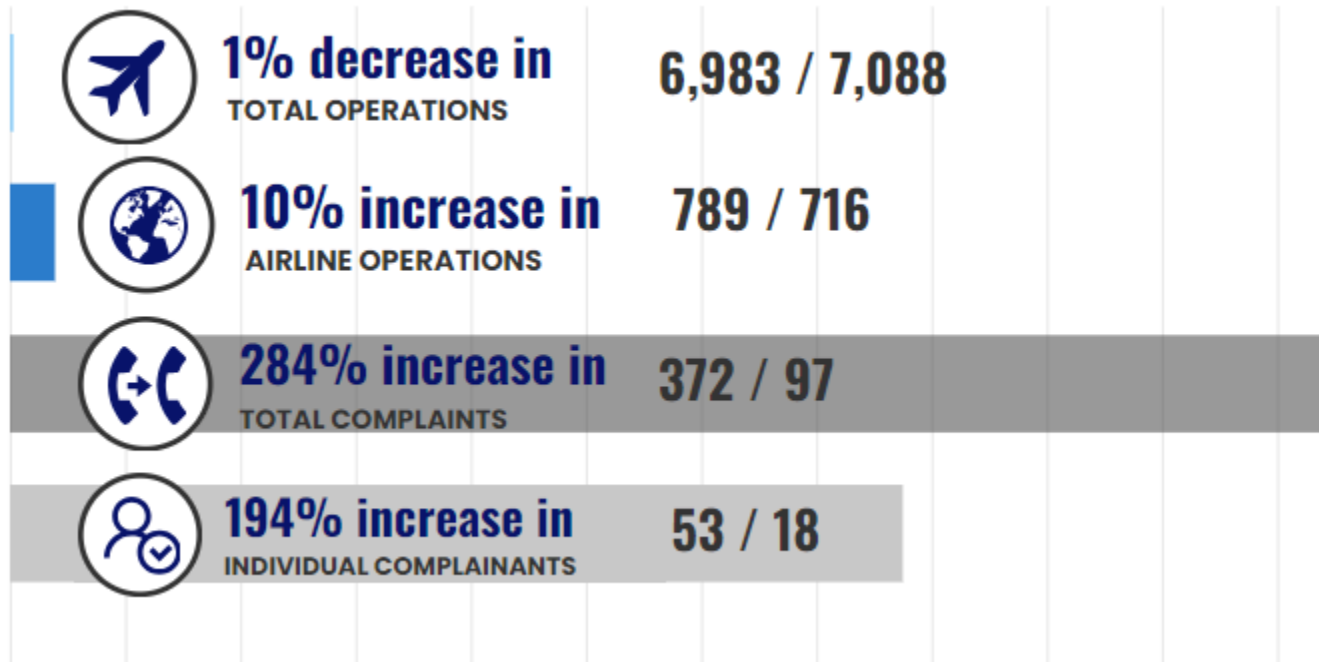
- 53 Individual Commenters
- 26 New Commenters
- 245 Correlated Operations*
- 43 Complaints that were non-specific, were regarding operations that did not include STS as the origin or the destination (not Airport-related), or were unable to be correlated to a flight track/aircraft



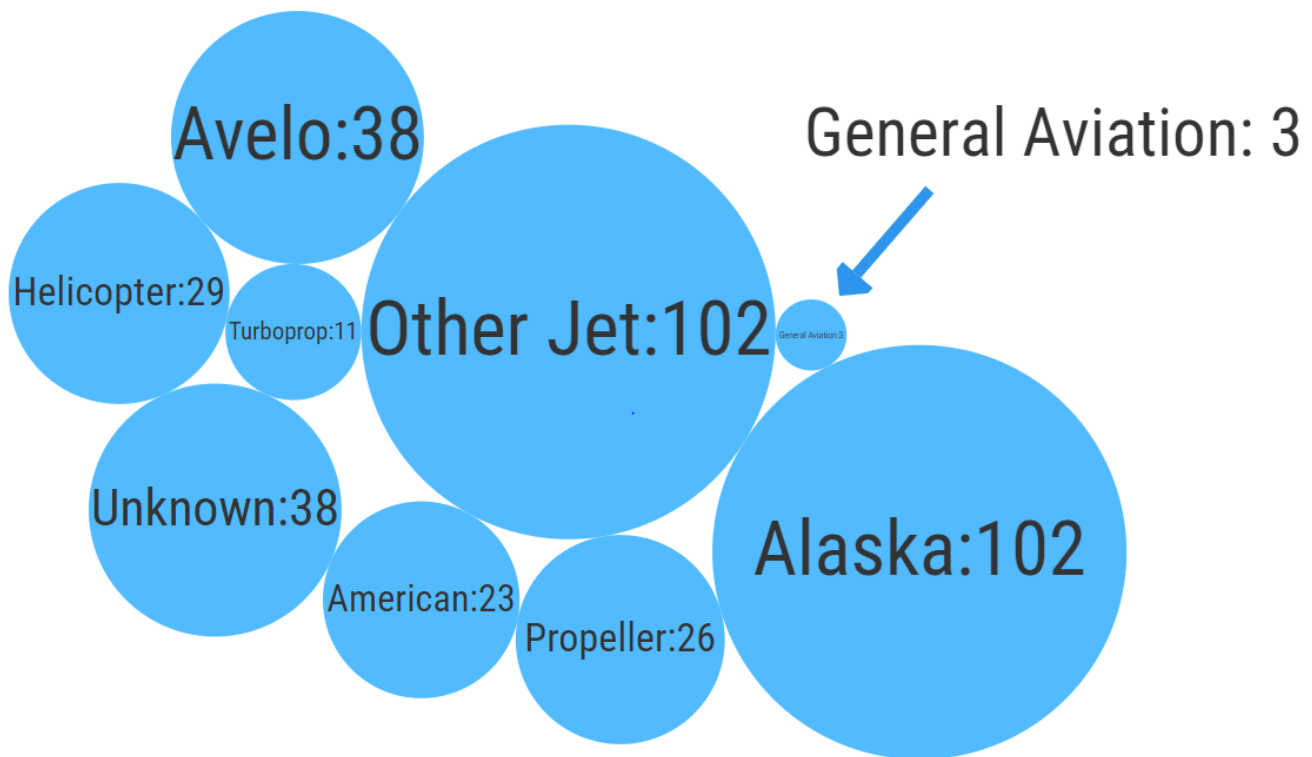
**An Operation is a departure from or an arrival to the Airport. Complaints may be correlated to more than one Operation or may not be correlated to an Operation.*

The Airport received 185 more complaints in April than in March. This month, 13 of the complaints received were from a commenter located greater than ten nautical miles from the Airport. 22 of the 53 individual commenters live within five nautical miles of STS, including 8 of the new commenters. The new commenters live in Forestville, Occidental, Penngrove, Santa Rosa, Sebastopol, and Sonoma. The majority of noise complaints received in April were regarding Alaska, Avelo, other jets, and helicopters.

What's Changed This Year? April 2024 vs. 2023



Airlines and Operators Identified Through Complaints

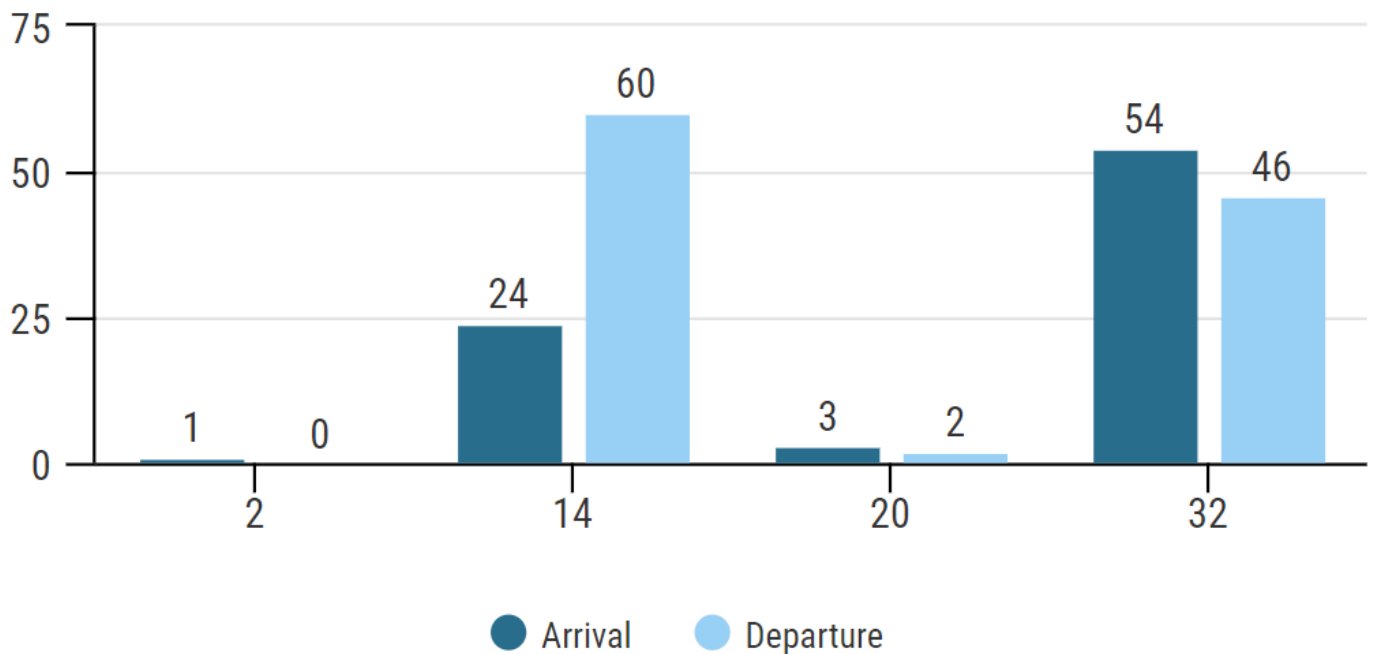


All airlines operate jets.

Aircraft Operated by Airlines at STS

ALASKA AIRLINES	AMERICAN AIRLINES	AVELO AIRLINES
<u>E175 (76 seats)</u> 	<u>E175 (76 seats)</u> 	<u>737-800 (147-189 seats)</u> 
<u>737-800 (147-178 seats)</u> 	<u>CRJ700 (65-76 seats)</u> 	
	<u>CRJ900 (76-79 seats)</u> 	

Identified Aircraft by Operation and Runway



Aircraft Points of Closest Approach (PCA)

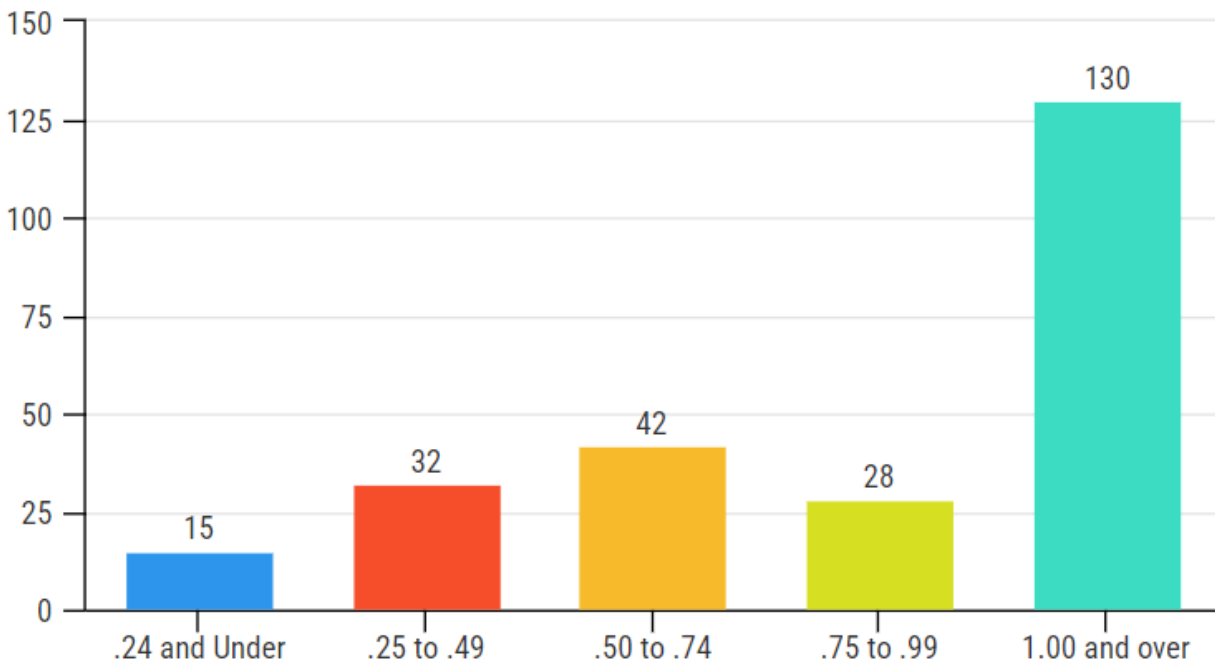


There were 247 aircraft identified through complaints made this month with a tracked point of closest approach (PCA). Sometimes called the PCA slant, the PCA is the distance in nautical miles between the commenter's address and the aircraft.

Sometimes called the PCA slant, the PCA is the distance in nautical miles between the commenter's address and the aircraft.

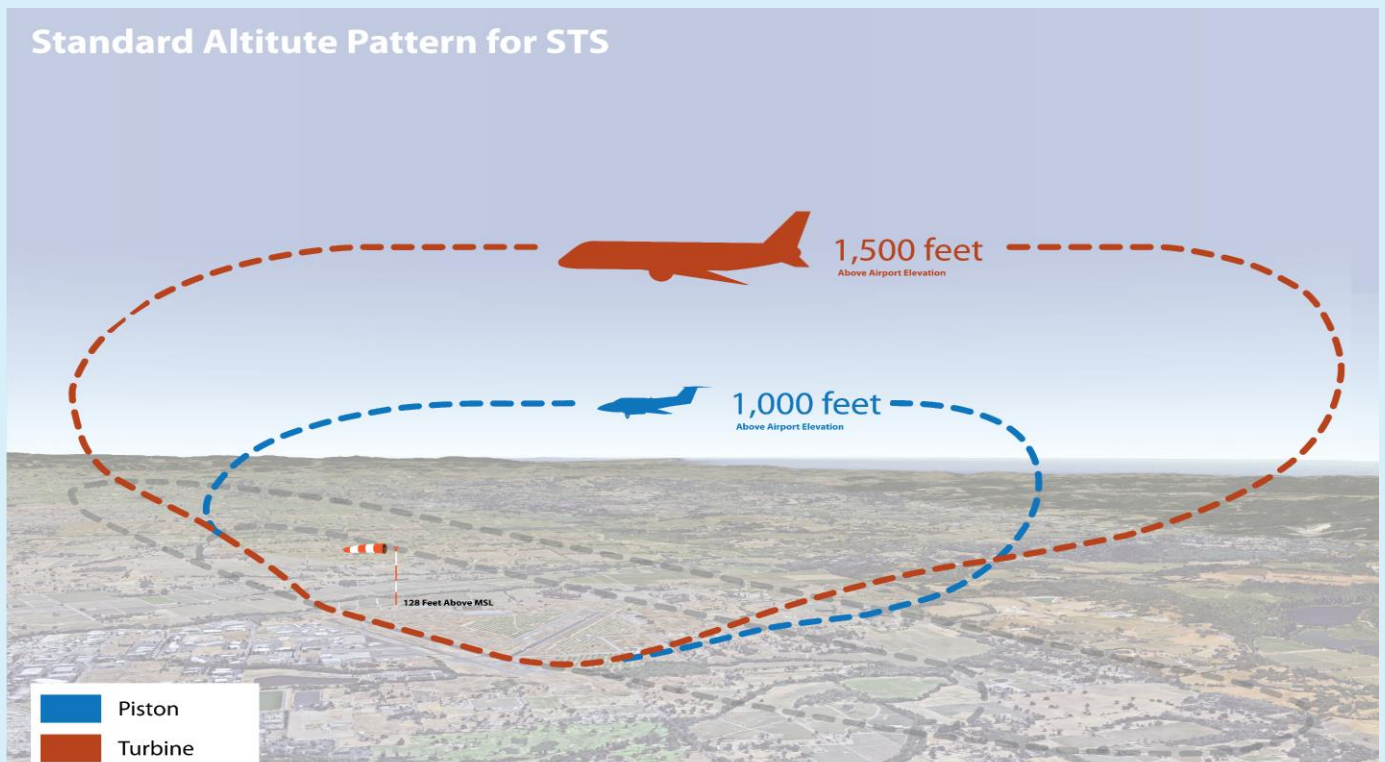
In April, 4% of aircraft that generated complaints were less than a quarter-mile from the commenter's address per the PCA measurement.

Distance Between Aircraft and Commenter Address in Nautical Miles This Month



What are the altitude requirements for aircraft landing at or taking off from the Airport?

The Airport's standard altitude pattern is the highest allowed by the FAA. Under FAA regulations, altitude restrictions are not applicable during landing and takeoff. The FAA has exclusive sovereignty of airspace in the United States (49 U.S.C. Section 40103(a)).



Aircraft Altitudes

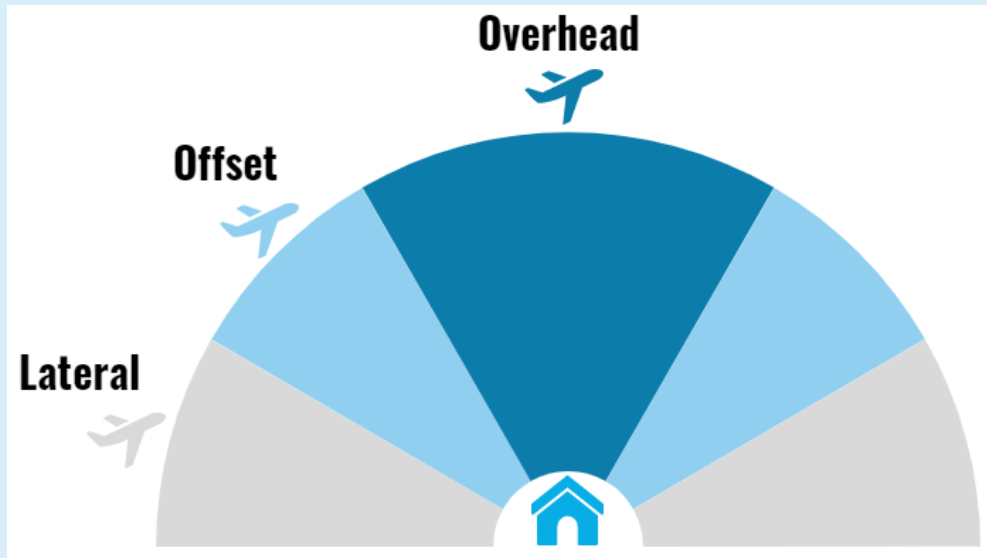
There were 240 aircraft identified through complaints made this month with a tracked altitude. At the point of closest approach to the commenter’s address, the altitude was recorded (in feet) in relation to the commenters location and may be represented as a negative number due to their location being at a higher elevation than the Airport and flight paths. Per FAA aircraft guidelines, except when necessary for takeoff or landing, aircraft must maintain an altitude of at least 1,000 feet over populated areas. Helicopters may operate safely at less than the minimum for other aircraft.

Recorded Altitude Range	Aircraft	Recorded Altitude										
Under 1,000 feet	16*	28	104	129	129	199	199	254	299	329	369	
		479	504	633	744	812	891					
1,000 to 1,499 feet	10	1125	1125	1167	1210	1211	1286	1386	1389	1422	1429	
1,500 to 1,999 feet	11	1730	1742	1772	1774	1839	1844	1850	1872	1914	1915	
Over 2,000 feet	203	1955										
		2065	2100	2181	2187	2215	2239	2239	2318	2356	2406	
		2415	2425	2425	2440	2447	2450	2456	2465	2489	2489	
		2489	2490	2500	2514	2515	2515	2539	2539	2539	2539	
		2564	2564	2564	2564	2625	2625	2650	2681	2686	2719	
		2740	2815	2875	2889	2890	2890	2915	2944	2944	2950	
		3040	3044	3050	3050	3081	3094	3097	3100	3165	3175	
		3194	3219	3240	3269	3315	3365	3369	3375	3390	3397	
		3400	3404	3415	3415	3450	3475	3490	3490	3503	3540	
		3565	3590	3615	3615	3615	3634	3639	3665	3715	3715	
		3715	3764	3765	3765	3765	3775	3787	3790	3794	3800	
		3815	3819	3840	3850	3890	3919	3919	3953	3964	3965	
		3965	3975	3975	3990	3990	3994	4025	4090	4090	4097	
		4115	4140	4165	4172	4190	4265	4275	4290	4290	4365	
		4365	4372	4390	4390	4390	4390	4390	4397	4415	4415	
		4419	4422	4422	4440	4440	4465	4465	4490	4525	4540	
		4540	4565	4572	4615	4636	4650	4700	4737	4740	4740	
		4744	4750	4790	4877	4890	4915	4915	4915	4922	4927	
		4935	4935	4935	4940	4940	4940	4940	4952	4952	4952	
		4952	4952	4953	4956	4965	4965	4977	4977	4977	4977	
4977	4977	4977	4977	4979	4989	4990	4990	4990	4990			
		4990	4990	5000								

*Aircraft under 500 feet are typically helicopters.

Aircraft Angles

At the point of closest approach to the commenter's address, the angle was calculated. The angle of the aircraft was then categorized as lateral (0° to 30°), offset (30° to 60°), or overhead (60° to 90°)



Lateral = 0° to 30° Offset = 30° to 60° Overhead = 60° to 90°

Flight Angles Based on the Time of Complaint for the Current Month

Overhead: 20.9 %

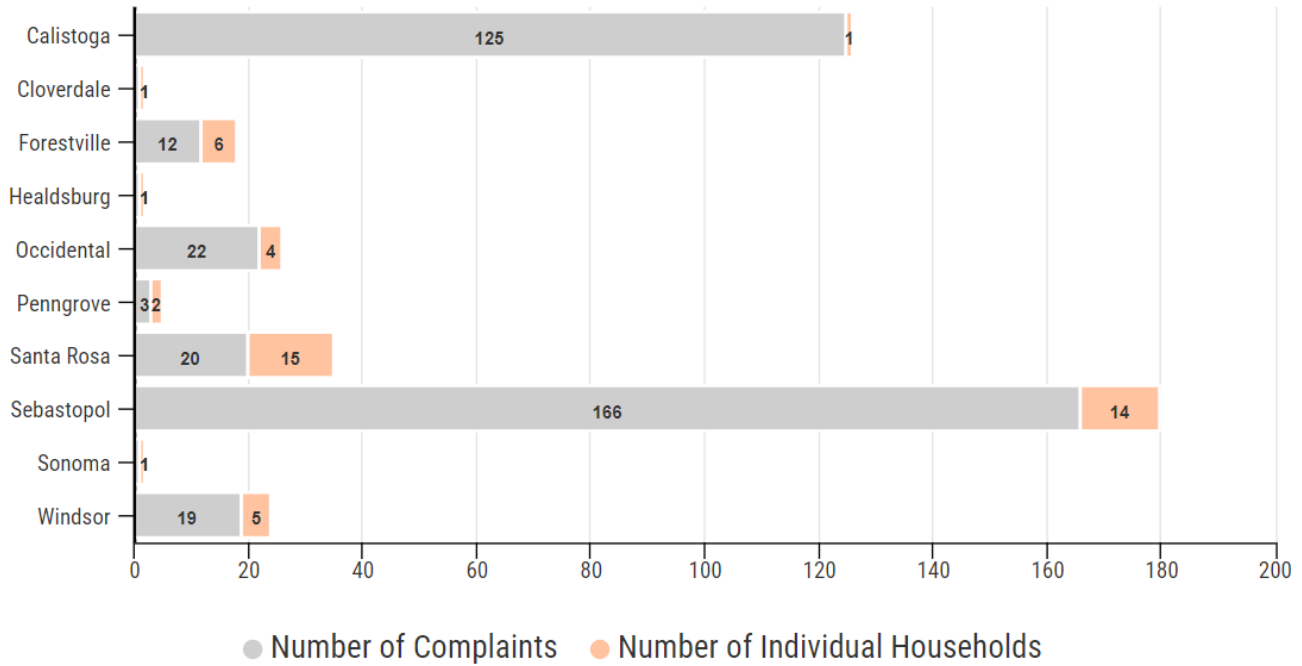


Lateral: 43.9 %

Offset: 35.2 %

● Lateral ● Offset ● Overhead

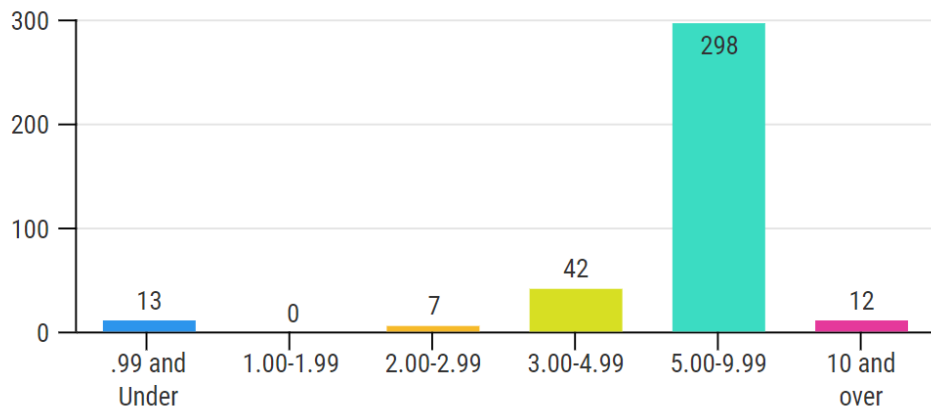
Originating Locations of Complaints



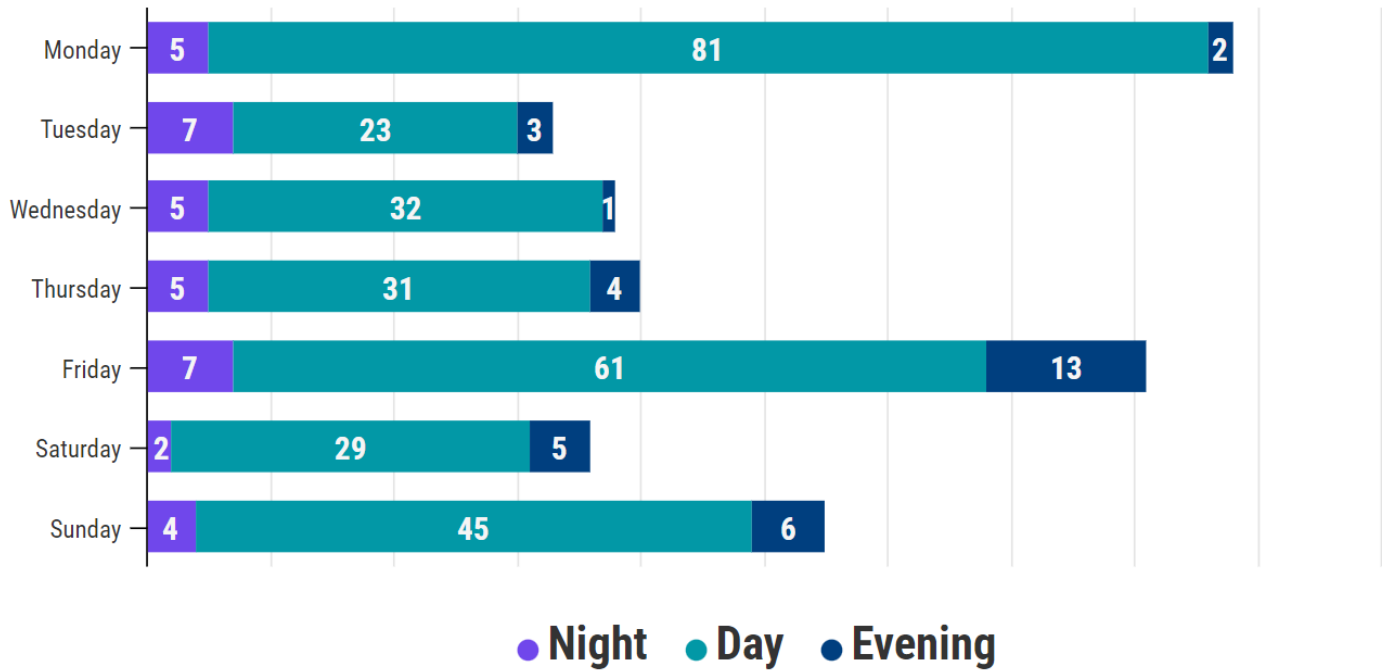
Why are aircraft flying over my house?

The FAA directs traffic into and out of the Airport. Flights are directed to the safest pattern depending on the amount of air traffic and prevailing winds at the time of arrival or departure. Safety is the FAA’s first consideration. However, aircraft can and do fly over all parts of Sonoma County. Sonoma County does not contain any No Fly Zones.

Distance of Originating Complaint Locations From STS (in Nautical Miles)

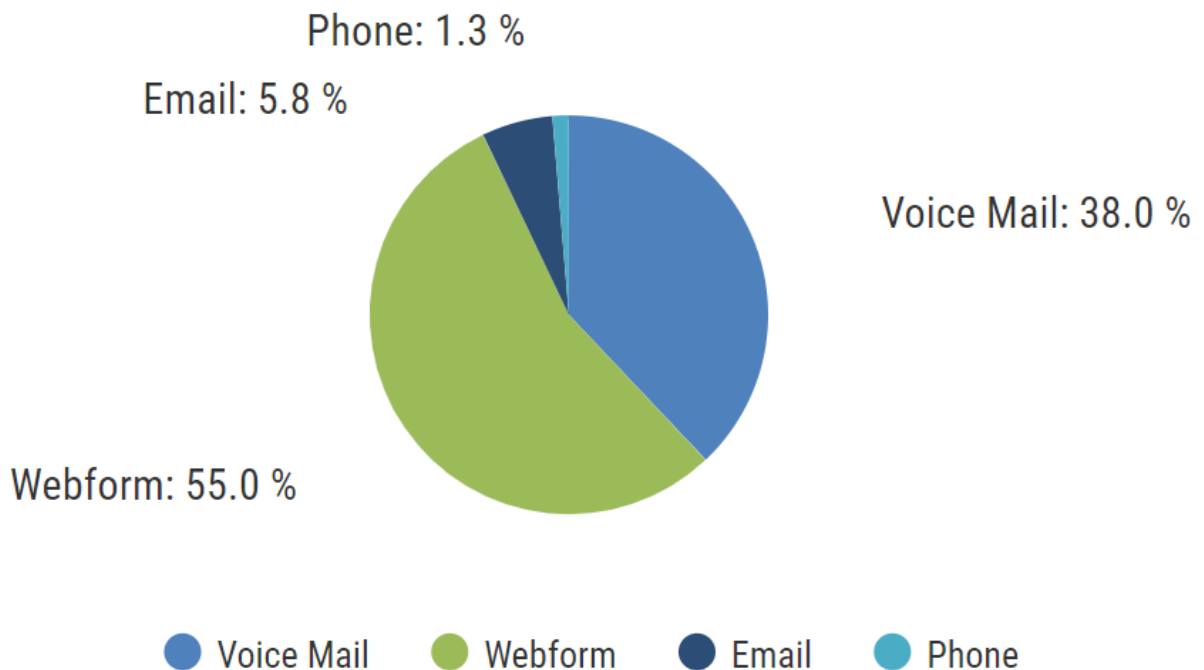


Complaint Days and Times

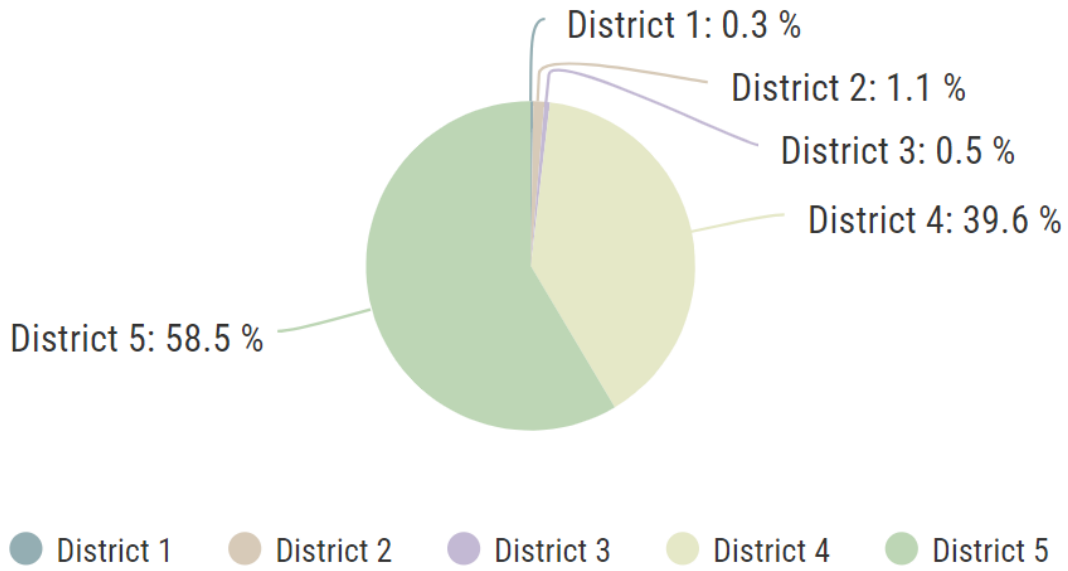


Night = 10:00 PM – 6:59 AM / **Day** = 7:00 AM to 5:59 PM / **Evening** = 6:00 PM to 9:59 PM

Method by Which Complaints Were Received



Noise Complaints for Correlated Flights by County District*



*Supervisory districts are based on the district map located on the Sonoma County [website](#).

Year-to-Date Operations and Complaints

Month	2024 Total Operations	2024 Airline Operations	2024 Complaints	2023 Total Operations	2023 Airline Operations	2023 Complaints
January	5,406	589	185	5,637	561	32
February	5,549	574	145	5,637	573	51
March	5,888	703	203	5,683	622	67
April	6,983	789	388	7,088	716	97
May				7,419	743	68
June				7,518	719	85
July				8,233	684	94
August				8,528	750	114
September				7,187	896	128
October				7,565	833	96
November				6,936	750	154
December				5,172	666	142
YTD	23,826	2,655	921	24,045	2,472	247

Year-to-Date Activities Identified Through Complaints*

Year-to-Date Complaints by District

Month	District 1	District 2	District 3	District 4	District 5
January	0	3	0	10	106
February	0	0	2	8	52
March	0	6	3	48	78
April	0	2	1	38	189
May					
June					
July					
August					
September					
October					
November					
December					
YTD	0	11	6	104	425

Year-to-Date Complaints by Aircraft

Complaints per Month	Alaska Airlines	Avelo Airlines	American Airlines	Total Airline Complaints	Other Jet	Helicopter	Propeller	Turboprop	Military	Unknown
January	38	3	0	41	67	21	14	10	0	16
February	17	10	0	27	68	9	19	10	0	34
March	35	15	6	56	126	12	20	14	0	29
April	102	38	23	163	141	30	29	11	1	38
May										
June										
July										
August										
September										
October										
November										
December										
Complaints YTD	192	66	29	287	402	72	82	45	1	85
Airline Operations YTD	1,857	488	310	2,352						
Airline Operations Per Complaint	9.7	7.4	10.7	8.2						

**Complaints may be correlated to more than one Operation (arrival or departure from the Airport) or may not be correlated to an Operation or aircraft.*

Contact the Charles M. Schulz – Sonoma County Airport

To learn more about Noise Abatement at the Airport or submit a noise complaint:

<https://stsgoodneighbor.com>

Complaint submission tips:

Provide as much information as possible, including date, time, and, if possible, a description of the aircraft. Include the reason for your complaint.

To submit a general comment:

Visit <https://sonomacountyairport.org/about-sts/contact/>