



Charles M. Schulz – Sonoma County Airport  
2290 Airport Boulevard  
Santa Rosa, CA 95403  
Ph: 707.565.7243

[www.sonomacountyairport.org](http://www.sonomacountyairport.org)

## Charles M. Schulz – Sonoma County Airport (STS)

# Aircraft Noise Monthly Report

May 2024



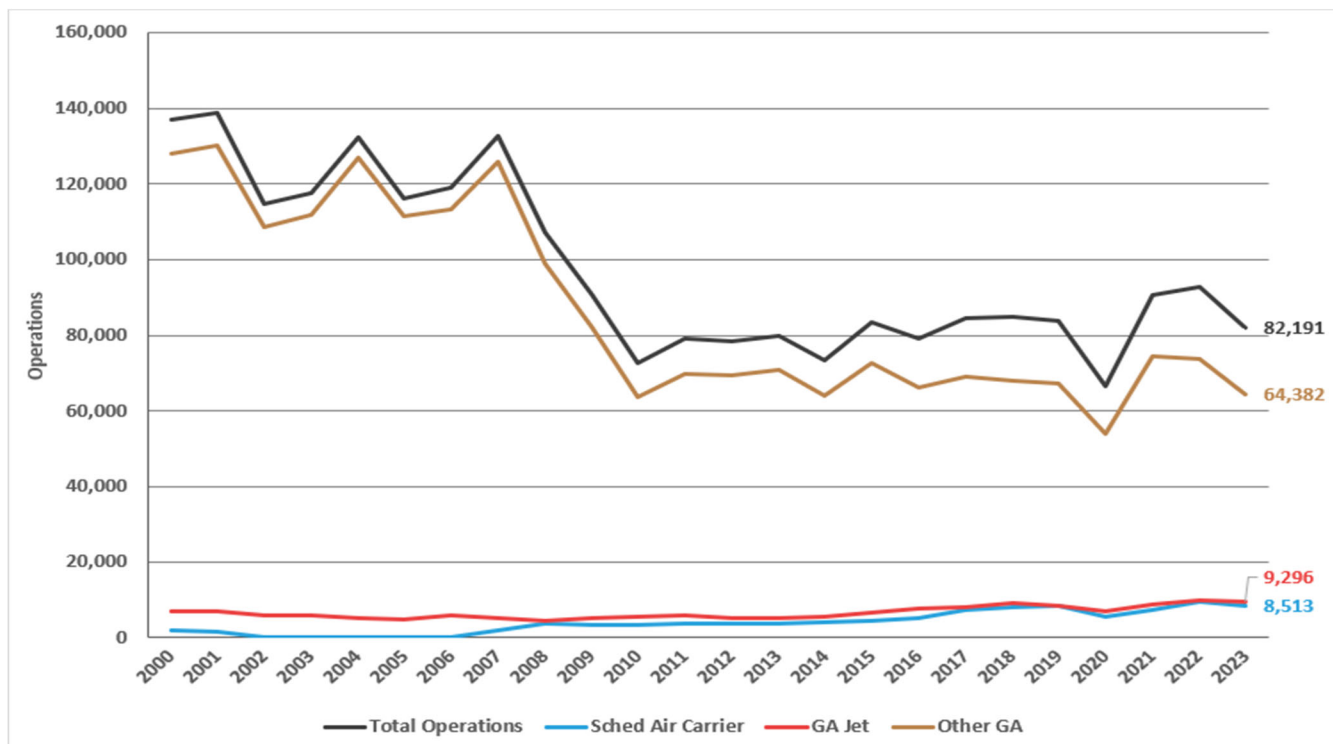
# About the Charles M. Schulz – Sonoma County Airport and Noise Abatement

The Airport operates as a self-supporting Enterprise Fund within the Department of Transportation and Public Works and under the jurisdiction of the Federal Aviation Administration (FAA). STS is both a general aviation facility, serving private planes and business jets, and is a commercial airline facility with scheduled air service. STS generates over \$1,300,000 annually in tax revenues, via its users, for Sonoma County and County School Districts.

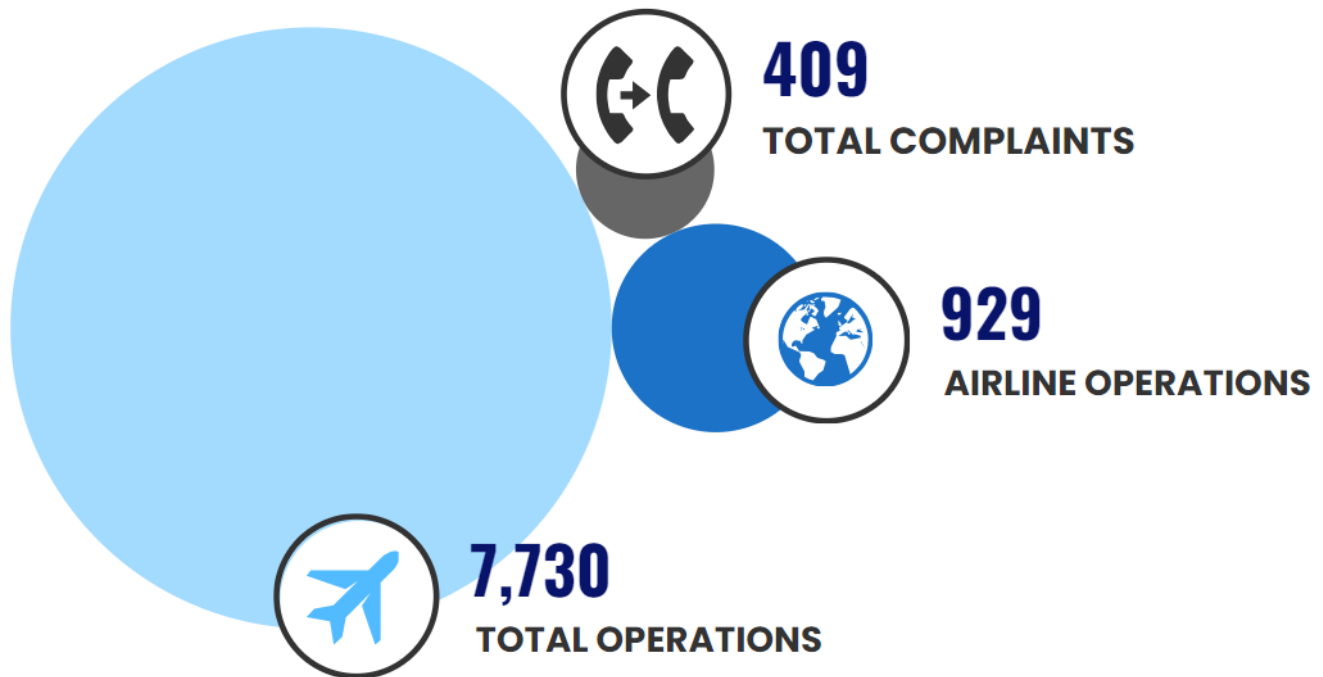
The Airport’s current Noise Abatement Program was established in 1988. STS also works within FAA guidelines, to encourage pilots and airlines to fly with consideration of our neighbors in mind. The Airport makes every effort to promote flight procedures that minimize aircraft noise while always maintaining safety as the highest priority. It is the FAA’s sole responsibility to develop air traffic rules, assign the use of airspace, and control air traffic.

STS is working with our Aviation Commission and a community advisory group to re-write the Airport’s Noise Abatement Guide and associated procedures (to be released in the future). Using flight-tracking and noise management software, the Airport also provides monthly complaint reports to pilots and to airlines so that operators can use real data to update flight practices and fly friendly. As more data becomes available to STS staff, additional analysis is performed and included in monthly and annual reports.

## STS Historical Operations



# This Month's Operations



# This Month's Noise Complaints At-A-Glance

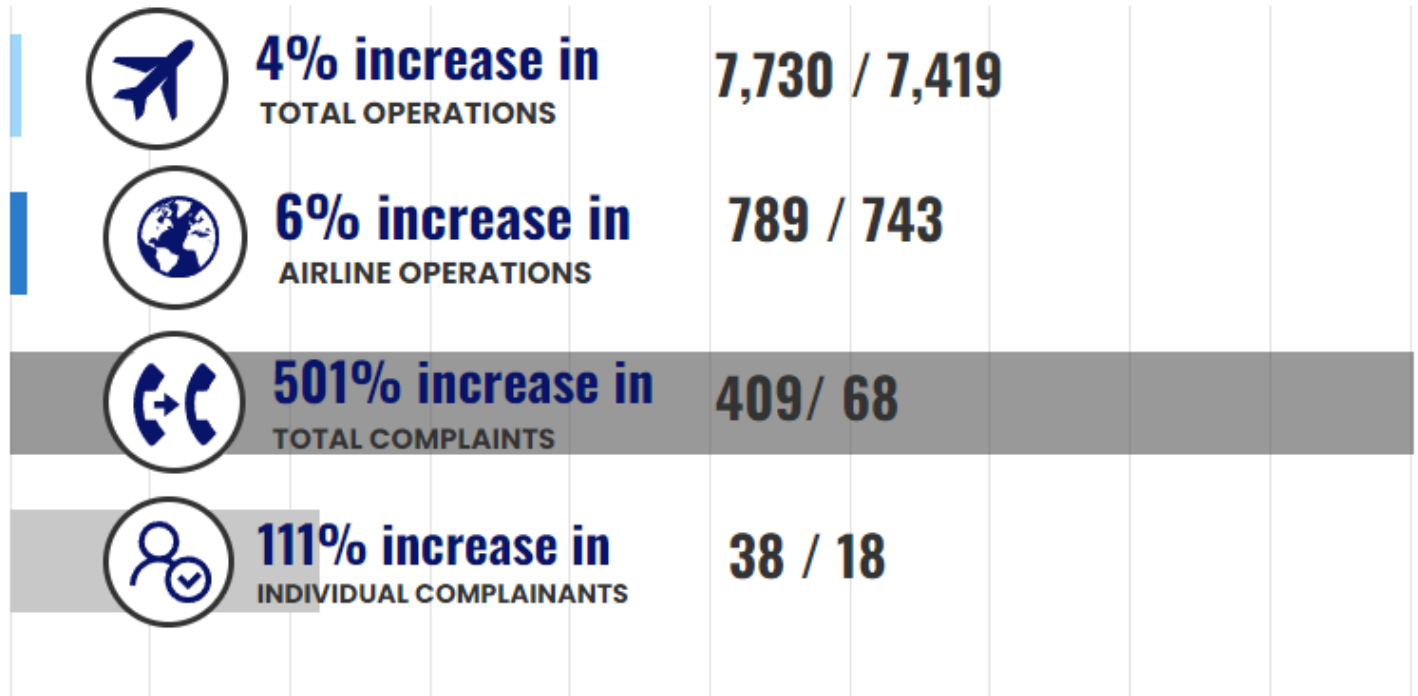
- 38 Individual Commenters
- 5 New Commenters
- 260 Correlated Operations\*
- 149 Complaints that were non-specific, were regarding operations that did not include STS as the origin or the destination (not Airport-related), or were unable to be correlated to a flight track/aircraft



*\*An Operation is a departure from or an arrival to the Airport. Complaints may be correlated to more than one Operation or may not be correlated to an Operation.*

The Airport received 21 more complaints in May than in April. This month, 13 of the complaints received were from a commenter located greater than ten nautical miles from the Airport. 14 of the 38 individual commenters live within five nautical miles of STS, including 1 of the new commenters. The new commenters live in Sebastopol, Windsor, Healdsburg, and Graton. The majority of noise complaints received in April were regarding airline and other jet activity.

# What's Changed This Year? May 2024 / 2023



## Airlines and Operators Identified Through Complaints



*All airlines operate jets.*

**ALASKA AIRLINES**



E175 (76 seats)



737-800 (147-178 seats)

**AMERICAN AIRLINES**



E175 (76 seats)



CRJ700 (65-76 seats)



CRJ900 (76-79 seats)



Airbus 319 (128 seats)

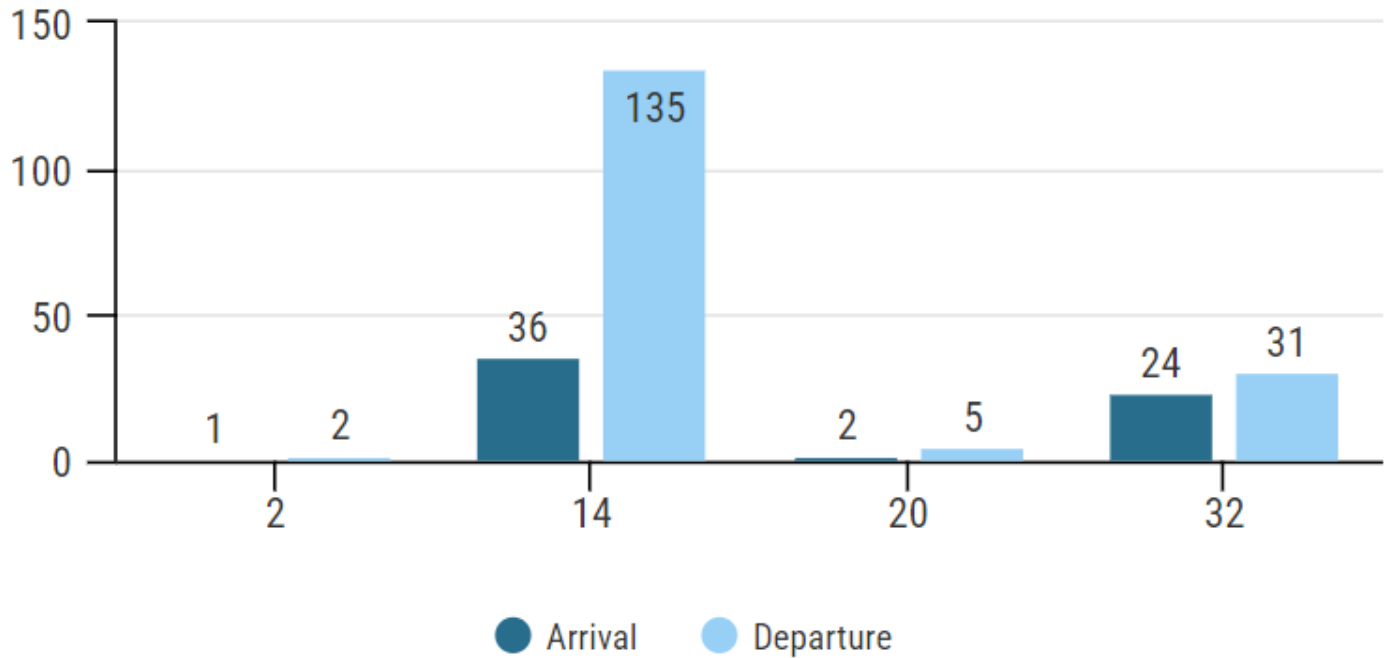
**AVELO AIRLINES**



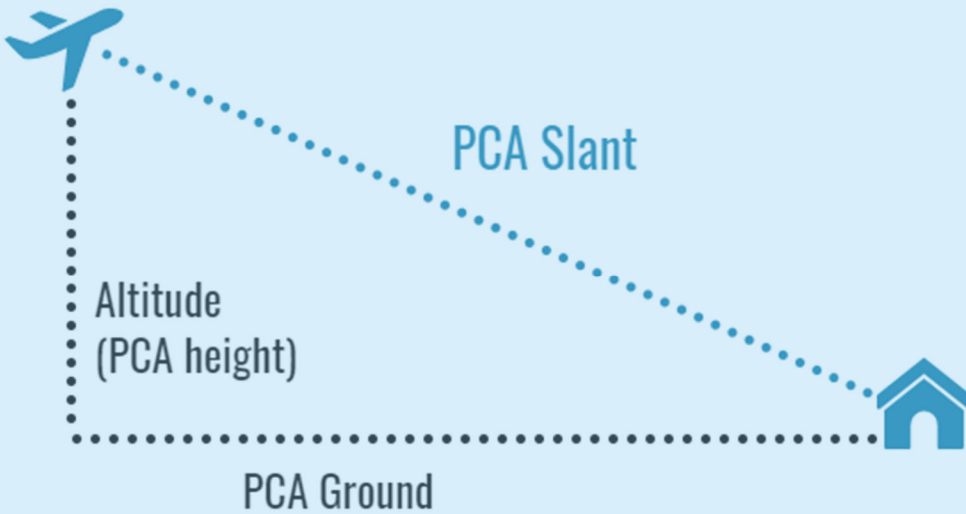
737-800 (147-189 seats)

**Aircraft Operated by Airlines at STS**

## Identified Aircraft by Operation and Runway



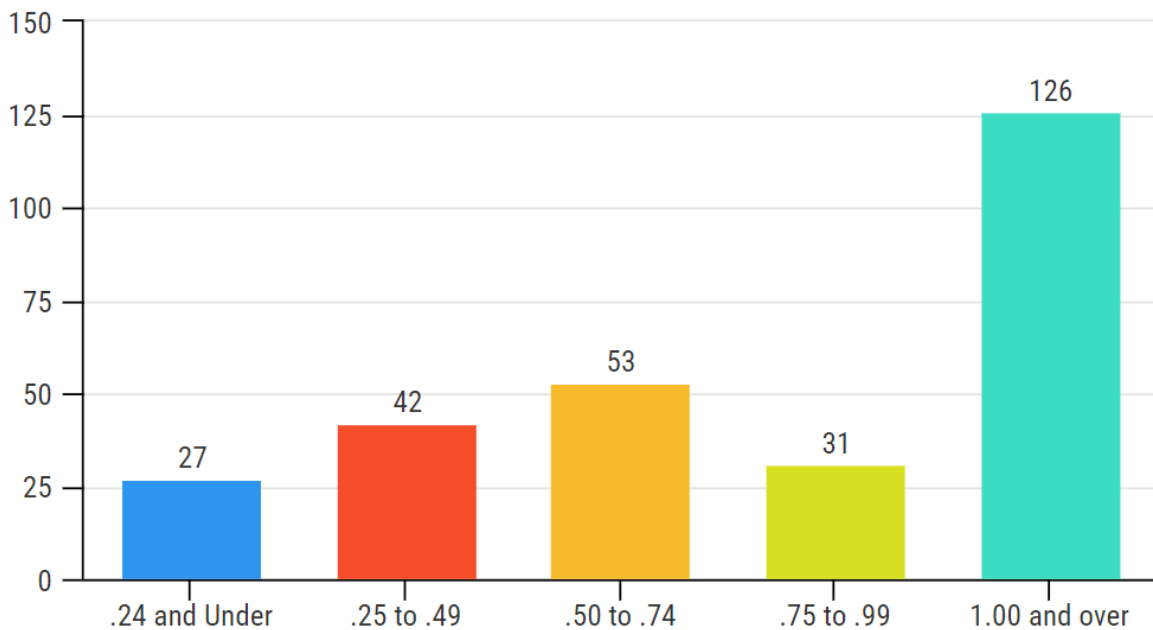
# Aircraft Points of Closest Approach (PCA)



There were 279 aircraft identified through complaints made this month with a tracked point of closest approach (PCA). Sometimes called the PCA slant, the PCA is the distance in nautical miles between the commenter’s address and the aircraft.

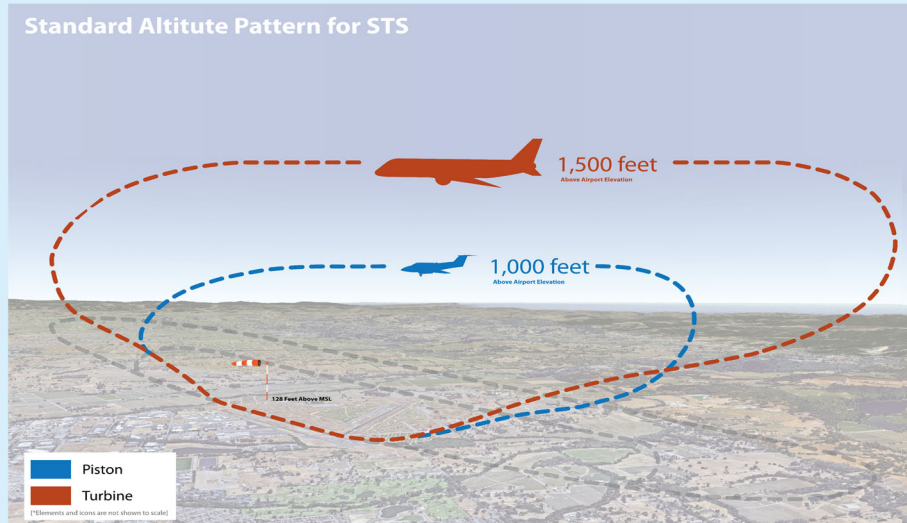
In May, 6.6% of aircraft that generated complaints were less than a quarter-mile from the commenter’s address per the PCA measurement.

## Distance Between Aircraft and Commenter Address in Nautical Miles This Month



## What are the altitude requirements for aircraft landing at or taking off from the Airport?

The Airport’s standard altitude pattern is the highest allowed by the FAA. Under FAA regulations, altitude restrictions are not applicable during landing and takeoff. The FAA has exclusive sovereignty of airspace in the United States (49 U.S.C. Section 40103(a)).



### Most Aircraft Were More Than One Nautical Miles from the Commenter

## Monthly Aircraft Altitudes

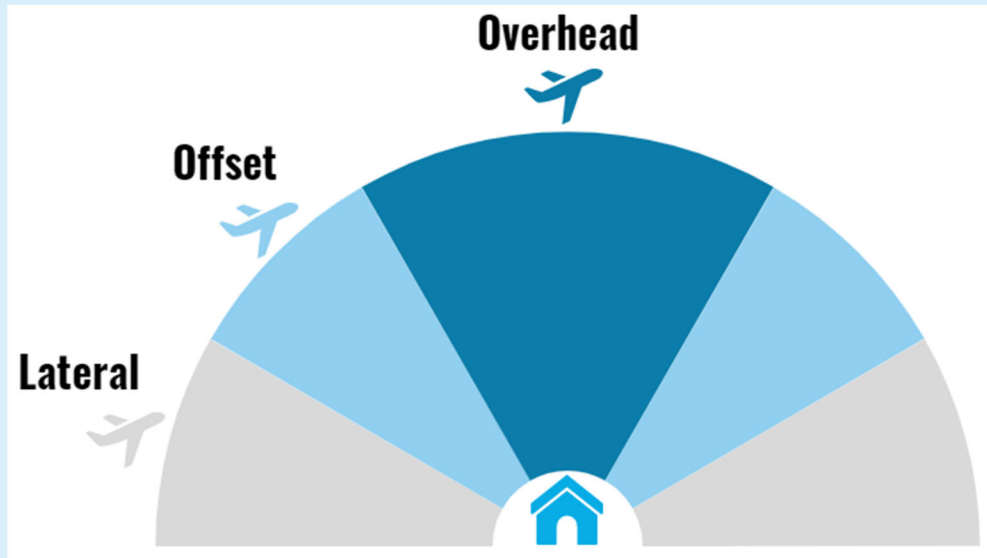
There were 260 aircraft identified through complaints made this month with a tracked altitude. At the point of closest approach to the commenter’s address, the altitude was recorded (in feet) in relation to the commenters location and may be represented as a negative number due to their location being at a higher elevation than the Airport and flight paths. Per FAA aircraft guidelines, except when necessary for takeoff or landing, aircraft must maintain an altitude of at least 1,000 feet over populated areas. Helicopters may operate safely at less than the minimum for other aircraft.

Recorded Altitude Range	Aircraft	Recorded Altitude
Under 1,000 feet	29*	-46, -21, 4, 29, 29, 29, 54, 154, 154, 179, 179, 204, 254, 315, 340, 365, 379, 389, 415, 421, 504, 579, 604, 620, 668, 682, 800, 897, 897
1,000 to 1,499 feet	6	1017, 1075, 1186, 1200, 1278, 1342
1,500 to 1,999 feet	14	1507, 1517, 1517, 1592, 1617, 1642, 1685, 1685, 1700, 1756, 1792, 1892, 1965, 1967
2,000 to 2,999 feet	39	Available by request
3,000 to 3,999 feet	85	Available by request
Over 4,000 feet	87	Available by request

\*Aircraft under 500 feet are typically helicopters.

# Aircraft Angles

At the point of closest approach to the commenter's address, the angle was calculated. The angle of the aircraft was then categorized as lateral (0° to 30°), offset (30° to 60°), or overhead (60° to 90°)



*Lateral = 0° to 30° Offset = 30° to 60° Overhead = 60° to 90°*

## Flight Angles Based on the Time of Complaint for the Current Month

Overhead: 25.8 %

Lateral: 38.3 %

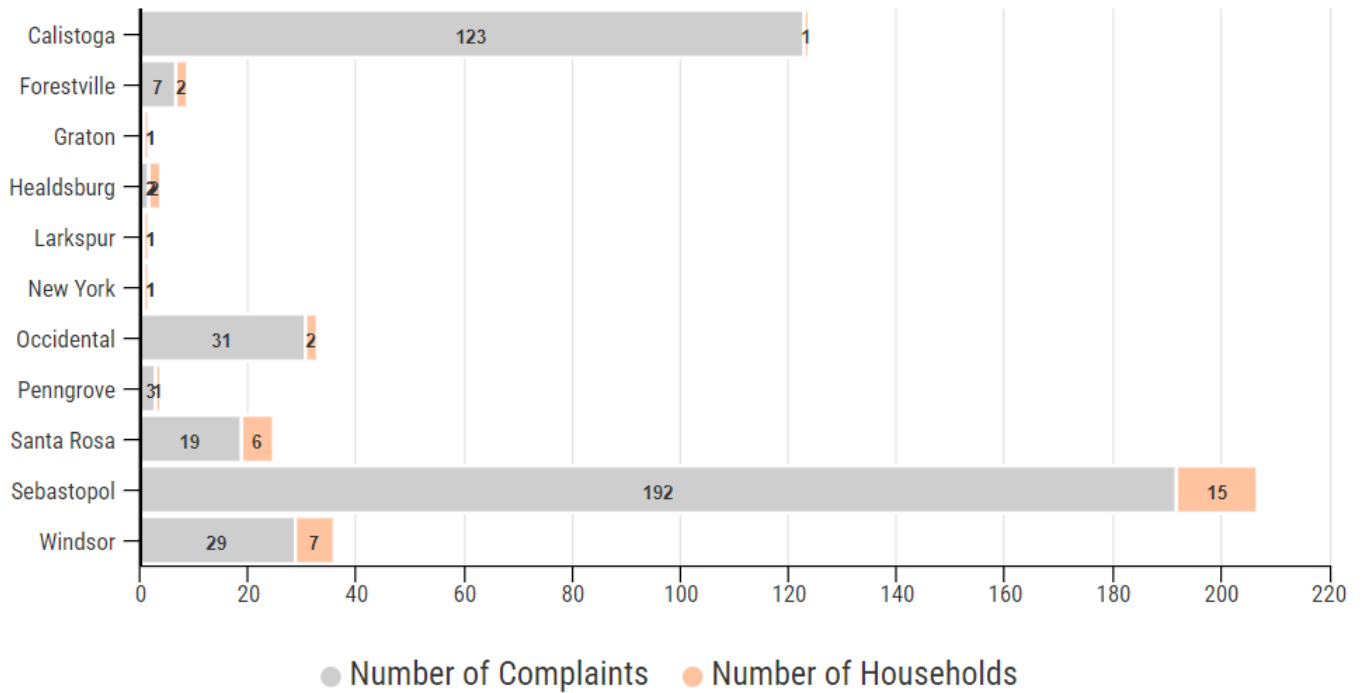


Offset: 35.9 %

● Lateral ● Offset ● Overhead



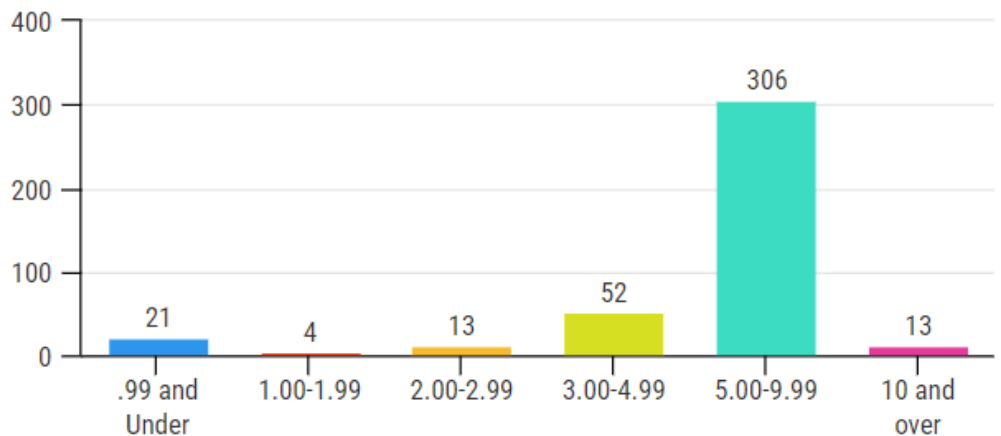
### Originating Locations of Complaints



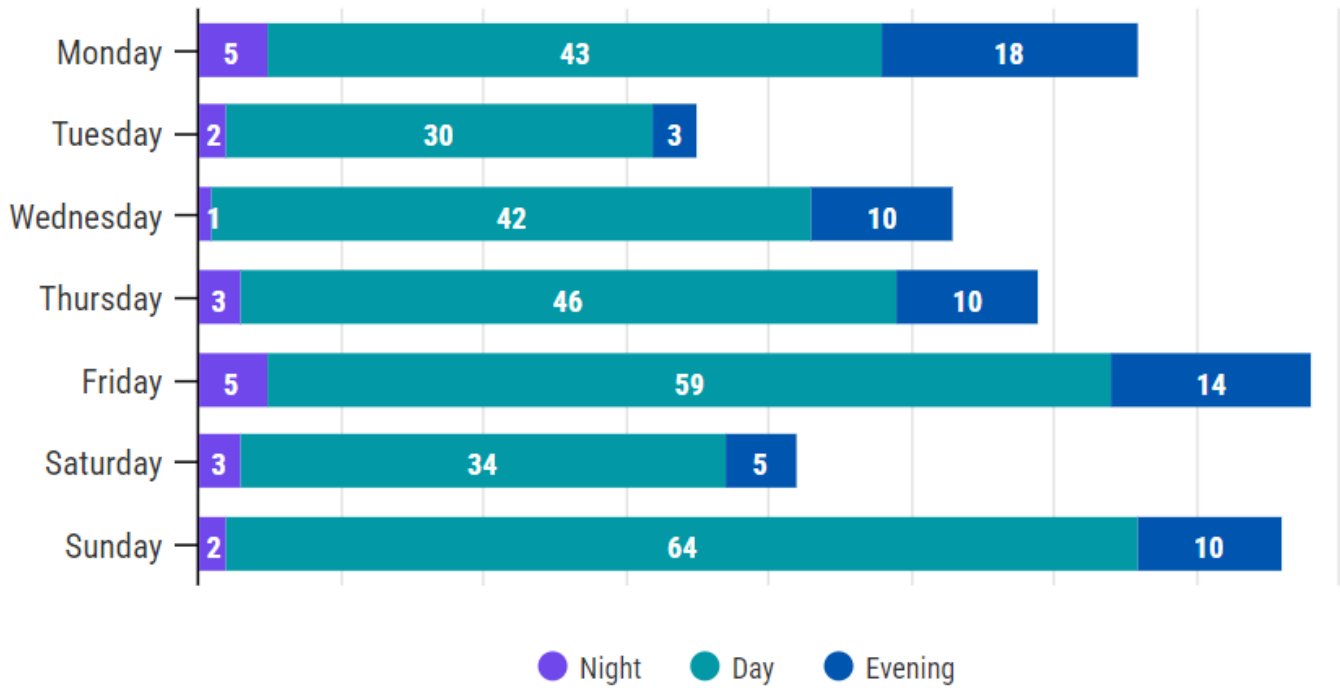
### Why are aircraft flying over my house?

The FAA directs traffic into and out of the Airport. Flights are directed to the safest pattern depending on the amount of air traffic and prevailing winds at the time of arrival or departure. Safety is the FAA’s first consideration. However, aircraft can and do fly over all parts of Sonoma County. Sonoma County does not contain any No Fly Zones.

### Distance of Originating Complaint Locations From STS (in Nautical Miles)

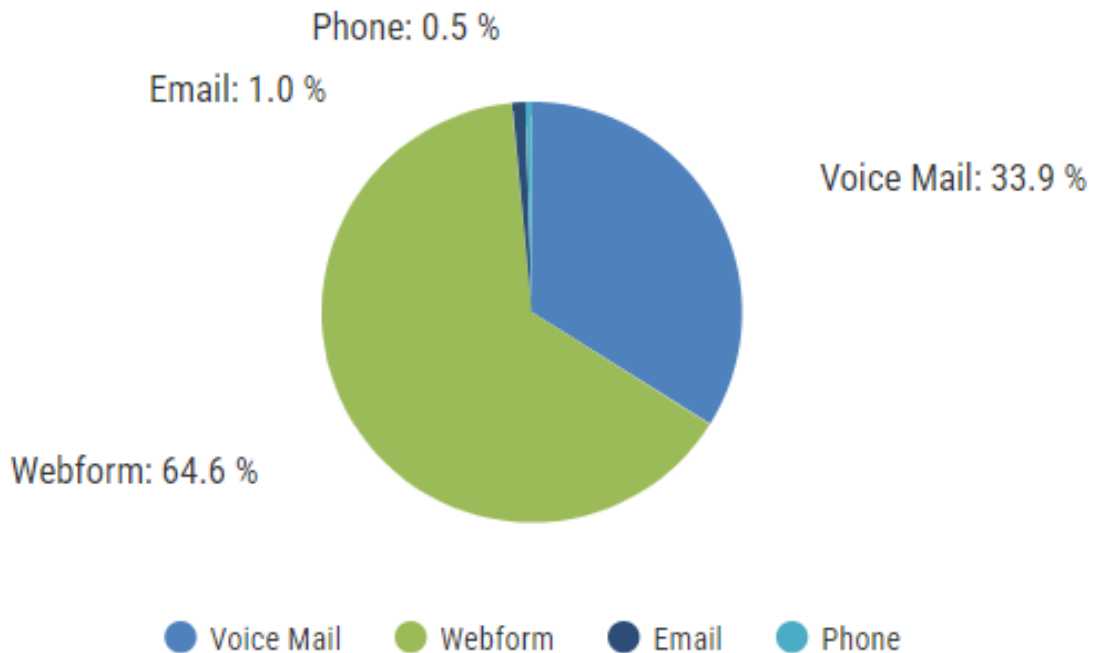


## Complaint Days and Times

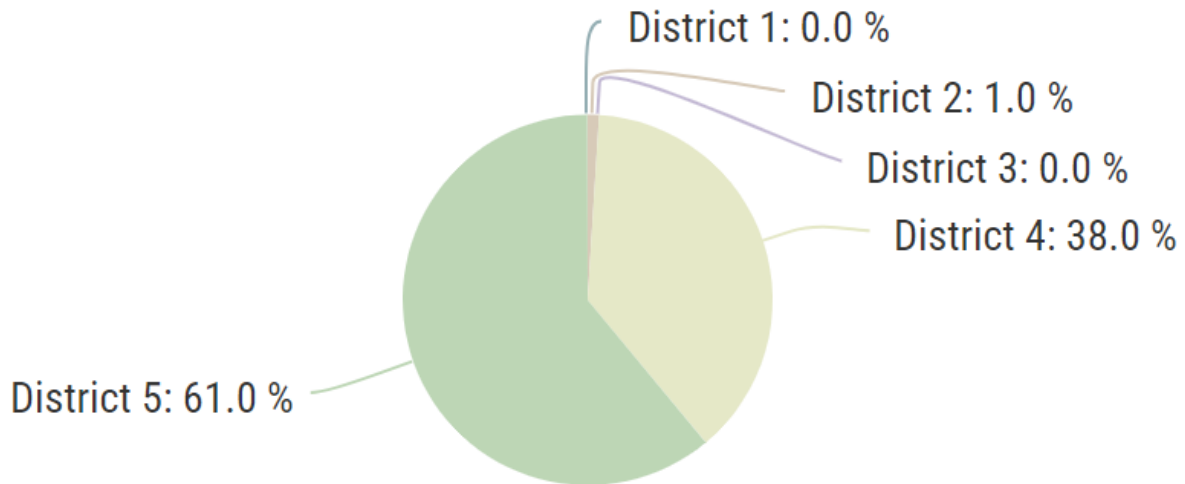


**Night** = 10:00 PM – 6:59 AM / **Day** = 7:00 AM to 5:59 PM / **Evening** = 6:00 PM to 9:59 PM

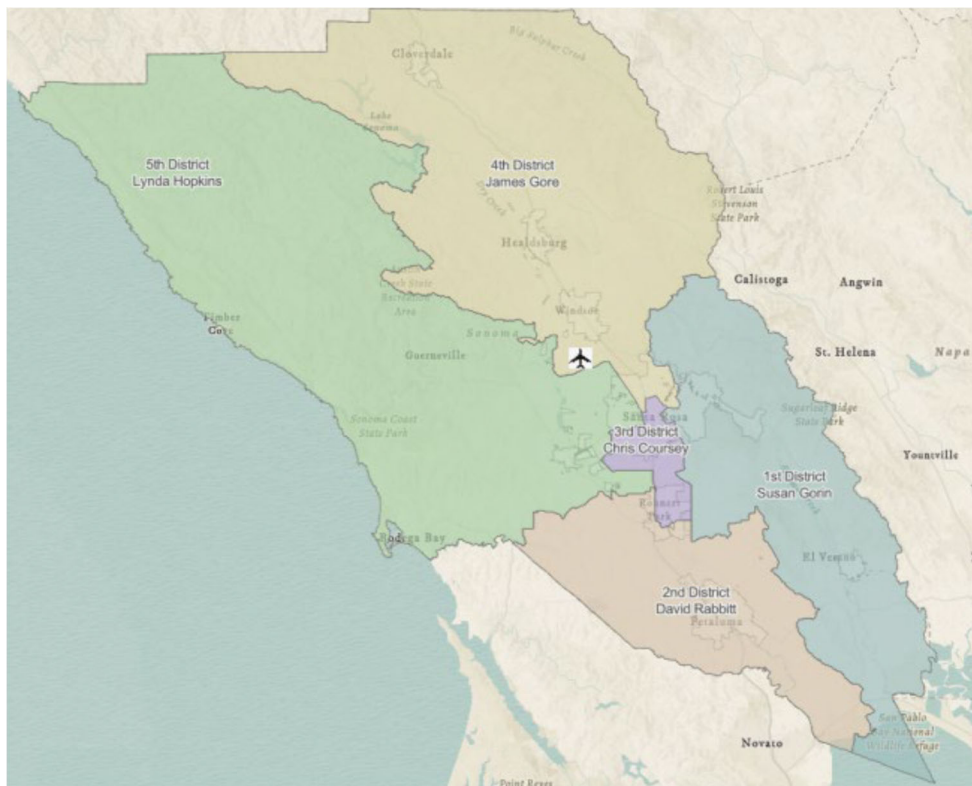
## Method by Which Complaints Were Received



# Noise Complaints for Correlated Flights by County District\*



- District 1
- District 2
- District 3
- District 4
- District 5



\*Supervisory districts are based on the district map located on the Sonoma County [website](#).

## Year-to-Date Operations and Complaints

Month	2024 Total Operations	2024 Airline Operations	2024 Complaints	2023 Total Operations	2023 Airline Operations	2023 Complaints
January	5,406	589	185	5,637	561	32
February	5,549	574	145	5,637	573	51
March	5,888	703	203	5,683	622	67
April	6,983	789	388	7,088	716	97
May	7,730	929	409	7,419	743	68
June				7,518	719	85
July				8,233	684	94
August				8,528	750	114
September				7,187	896	128
October				7,565	833	96
November				6,936	750	154
December				5,172	666	142
<b>YTD</b>	<b>31,556</b>	<b>3,584</b>	<b>1,330</b>	<b>31,464</b>	<b>3,215</b>	<b>315</b>

Year-to-Date Activities Identified Through Complaints\*

## Year-to-Date Complaints by District

Month	District 1	District 2	District 3	District 4	District 5
January	0	3	0	10	106
February	0	0	2	8	52
March	0	6	3	48	78
April	0	2	1	38	189
May	0	4	0	131	239
June					
July					
August					
September					
October					
November					
December					
<b>YTD</b>	<b>0</b>	<b>15</b>	<b>6</b>	<b>235</b>	<b>664</b>

\*Prior to May, 2024 the number of complaints reported per district were based on correlated flights only. As of May 1<sup>st</sup>, the data reflects all complaints with a known district whether a flight is correlated or not.

## Year-to-Date Complaints by Aircraft

Complaints per Month	Alaska Airlines	Avelo Airlines	American Airlines	Total Airline Complaints	Other Jet	Helicopter	Propeller	Turboprop	Military	Unknown
January	38	3	0	41	67	21	14	10	0	16
February	17	10	0	27	68	9	19	10	0	34
March	35	15	6	56	126	12	20	14	0	29
April	102	38	23	163	141	30	29	11	1	38
May	123	34	27	184	151	31	33	3	0	5
June										
July										
August										
September										
October										
November										
December										
<b>Complaints YTD</b>	<b>315</b>	<b>100</b>	<b>56</b>	<b>471</b>	<b>553</b>	<b>103</b>	<b>115</b>	<b>48</b>	<b>1</b>	<b>90</b>
<b>Airline Operations YTD</b>	<b>2,460</b>	<b>690</b>	<b>434</b>	<b>3,157</b>						
<b>Airline Operations Per Complaint</b>	<b>7.8</b>	<b>6.9</b>	<b>7.8</b>	<b>6.7</b>						

*\*Complaints may be correlated to more than one Operation (arrival or departure from the Airport) or may not be correlated to an Operation or aircraft.*

## Contact the Charles M. Schulz – Sonoma County Airport

**To learn more about Noise Abatement at the Airport or submit a noise complaint:**

<https://stsgoodneighbor.com>

**Complaint submission tips:**

Provide as much information as possible, including date, time, and, if possible, a description of the aircraft. Include the reason for your complaint.

**To submit a general comment:**

Visit <https://sonomacountyairport.org/about-sts/contact/>