



Charles M. Schulz – Sonoma County Airport  
2290 Airport Boulevard  
Santa Rosa, CA 95403  
Ph: 707.565.7243  
[www.sonomacountyairport.org](http://www.sonomacountyairport.org)

**Charles M. Schulz – Sonoma County Airport (STS)**

# Aircraft Noise Monthly Report

**December 2020**



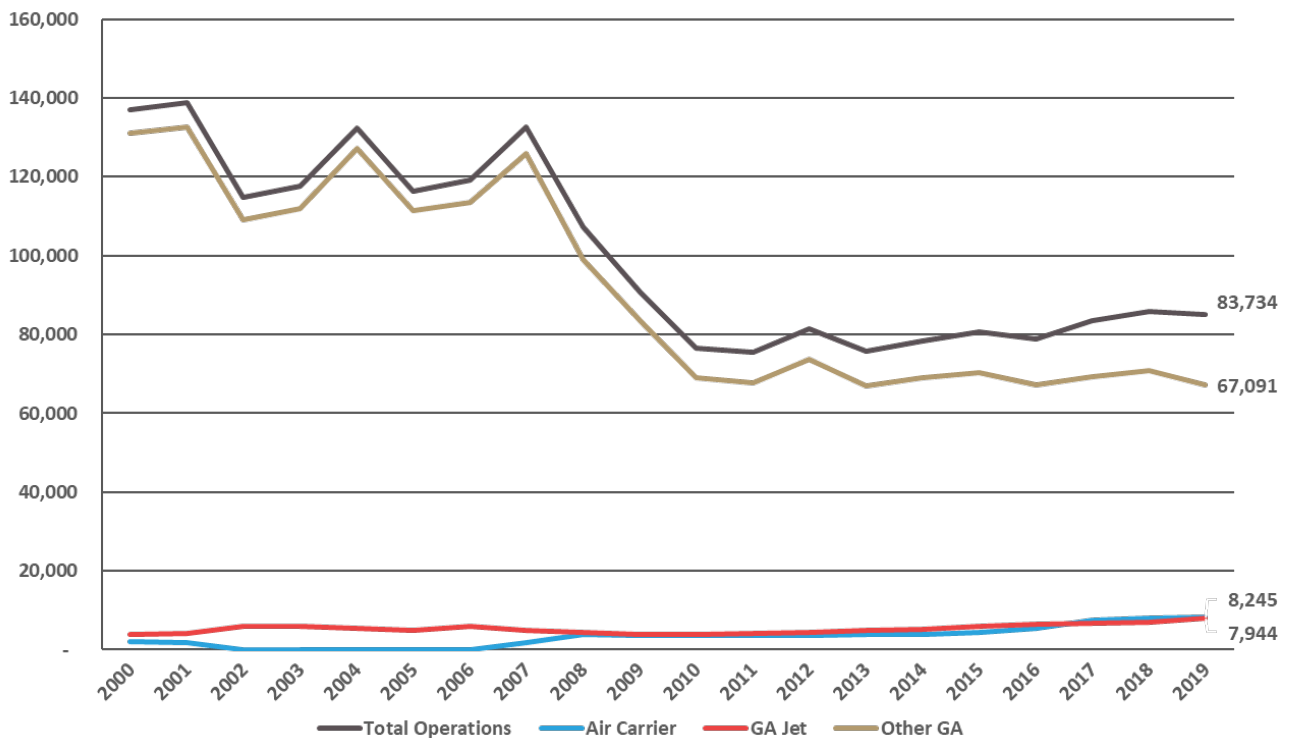
## About the Charles M. Schulz – Sonoma County Airport and Noise Abatement

The Airport operates as a self-supporting Enterprise Fund within the Department of Transportation and Public Works and under the jurisdiction of the Federal Aviation Administration (FAA). STS is both a general aviation facility, serving private planes and business jets, and is a commercial airline facility with scheduled air service. STS generates over \$1,300,000 annually in tax revenues, via its users, for Sonoma County and County School Districts.

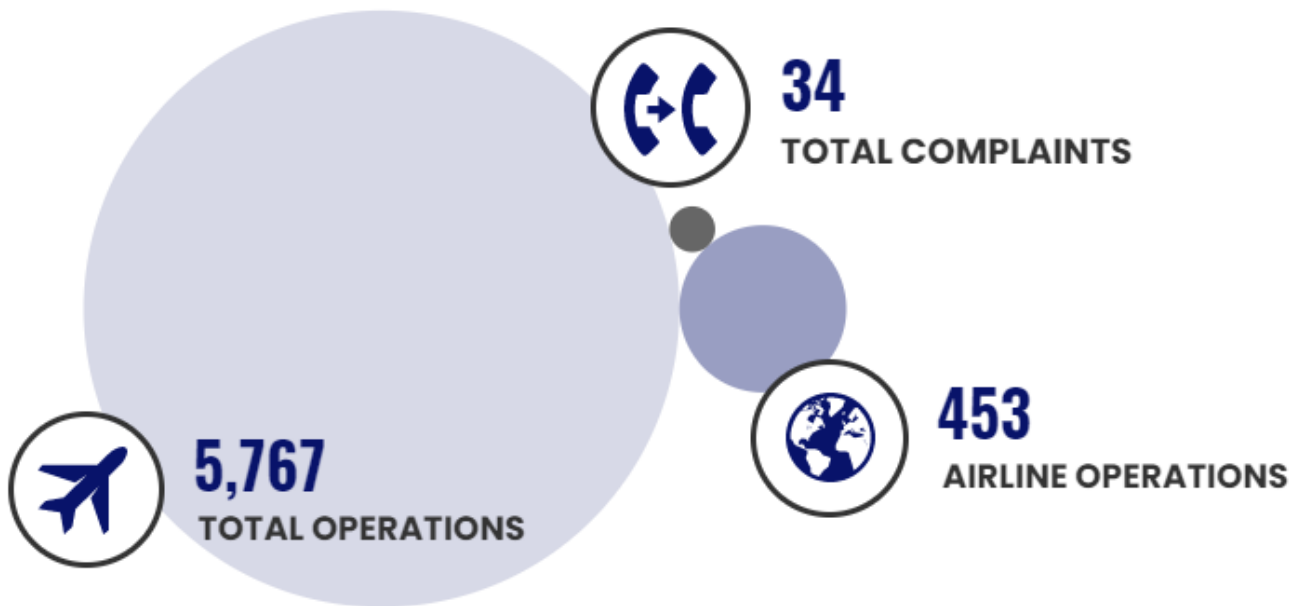
The Airport’s current Noise Abatement Program was established in 1988. STS also works within FAA guidelines, to encourage pilots and airlines to fly with consideration of our neighbors in mind. The Airport makes every effort to promote flight procedures that minimize aircraft noise while always maintaining safety as the highest priority. It is the FAA’s sole responsibility to develop air traffic rules, assign the use of airspace, and control air traffic.

STS is working with our Aviation Commission and a community advisory group to re-write the Airport’s Noise Abatement Guide and associated procedures. Using flight-tracking and noise management software, the Airport also provides monthly complaint reports to airlines so that operators can use real data to update flight practices and fly friendly.

## STS Historical Operations



# This Month's Operations



## This Month's Noise Complaints At-A-Glance

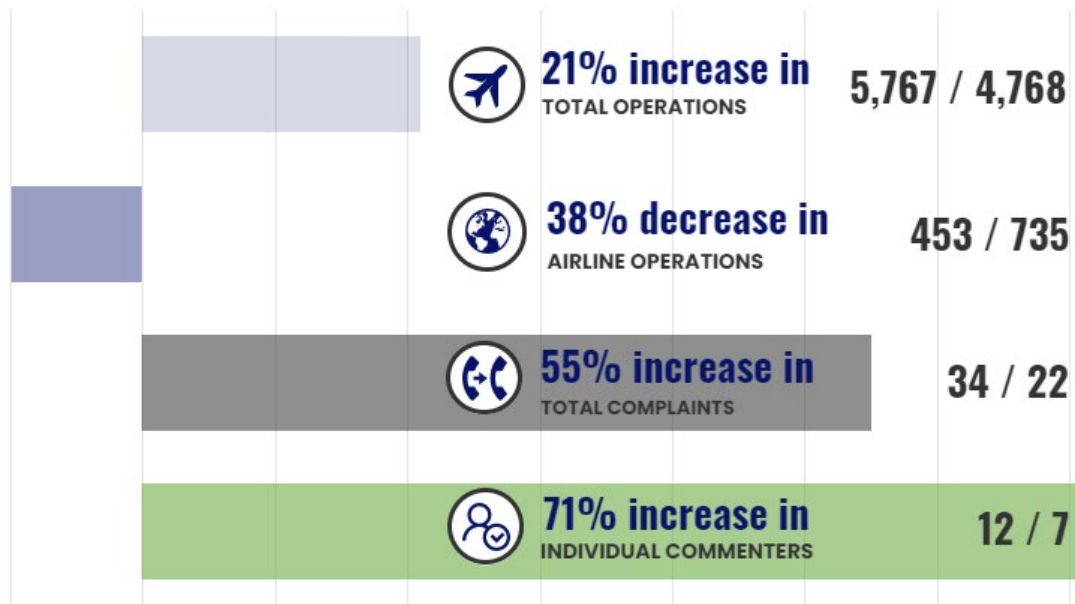
- 34 Noise Complaints received
- 12 Individual Commenters
- 2 New Commenters
- 28 Correlated Operations\*
- 8 Complaints that were non-specific, were regarding operations that did not include STS as the origin or the destination (not Airport-related), or were unable to be correlated to a flight track/aircraft



*\*An Operation is a departure from or an arrival to the Airport. Complaints may be correlated to more than one Operation or may not be correlated to an Operation.*

In December, complaints decreased by more than 40% from the previous month (34 in December, 58 in November). The number of commenters also decreased by more than 60% (12 in December, 32 in November). There were only two new commenters in December, compared to 15 in November. The majority of complaints received in December were regarding light general aviation (GA) aircraft operations. Of the 13 complaints received regarding GA operations, two originated within one nautical mile (NM) of the Airport, and the remainder originated greater than 10 miles from the Airport. Six of those operations were classified as not Airport-related (STS was neither the origin nor the destination). As in previous months, the Airport continued to receive several complaints from Cloverdale residents regarding operations out of the Cloverdale airport, and these complaints again largely accounted for the operations that were unable to be correlated to flight tracks and/or were classified as not Airport-related. In December the Airport received the lowest number of complaints regarding airline operations this year. The Airport also received fewer complaints regarding helicopter operations than in the previous month (7 in December, 15 in November). All complaints regarding helicopter operations were received from commenters within 1.5 NM from the Airport.

# What's Changed This Year? December 2020 vs. 2019



## Airlines and Operators Identified Through Complaints



*Alaska Airlines, American Airlines, and United Airlines operate jet aircraft. This graph does not include complaints which did not include an aircraft description and were unable to be correlated to a flight track/aircraft.*

## Aircraft Operated by Airlines at STS

**Alaska Airlines**  
E175 (76 seats)



**American Airlines**  
E175 (76 seats)



**United Airlines**  
CRJ200 (50 seats)



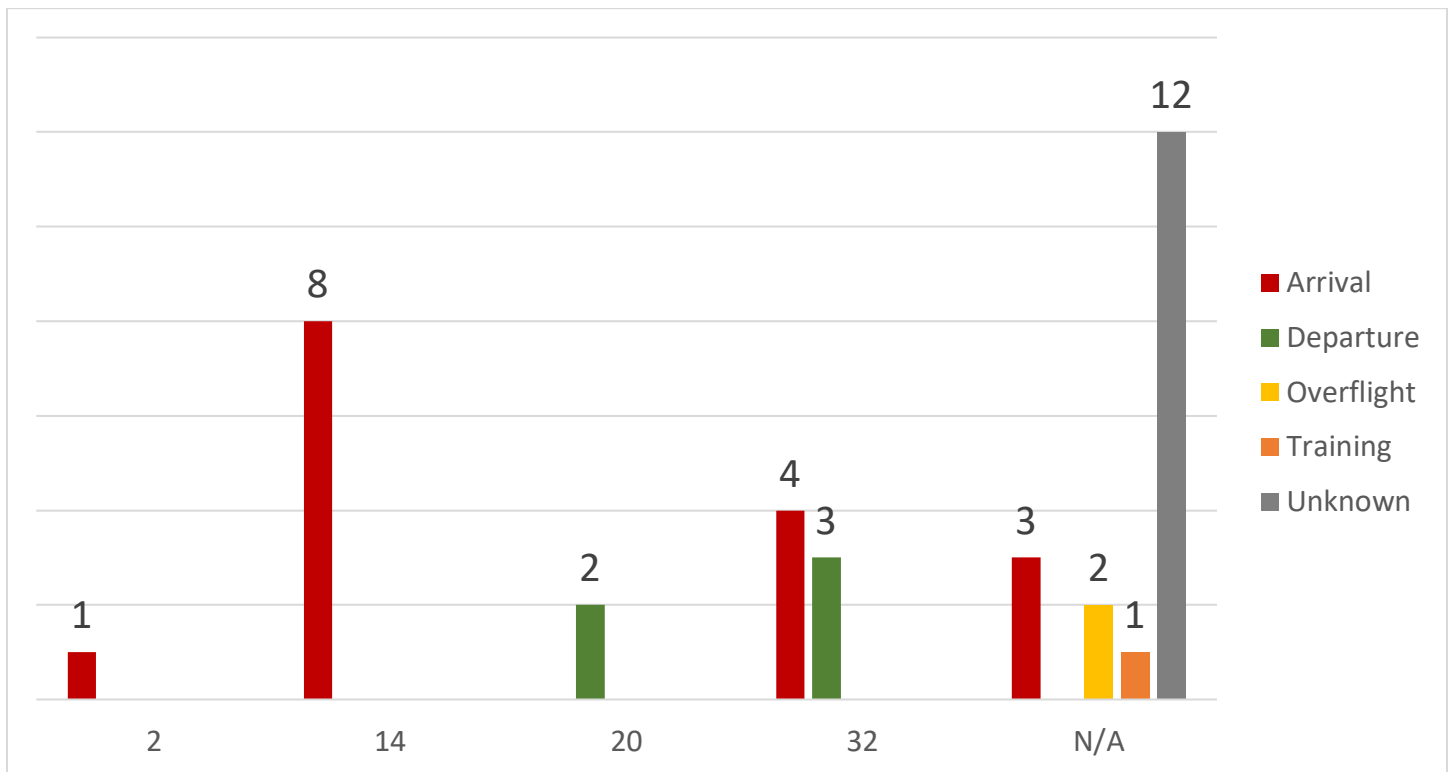
CRJ700 (65-76 seats)



CRJ900 (76-79 seats)



## Identified Aircraft by Operation, Runway



# Aircraft Altitudes

There were 22 aircraft with tracked altitudes identified through complaints made in December 2020. At the point of closest approach (PCA) to the complainant’s address, altitude was recorded (in feet).

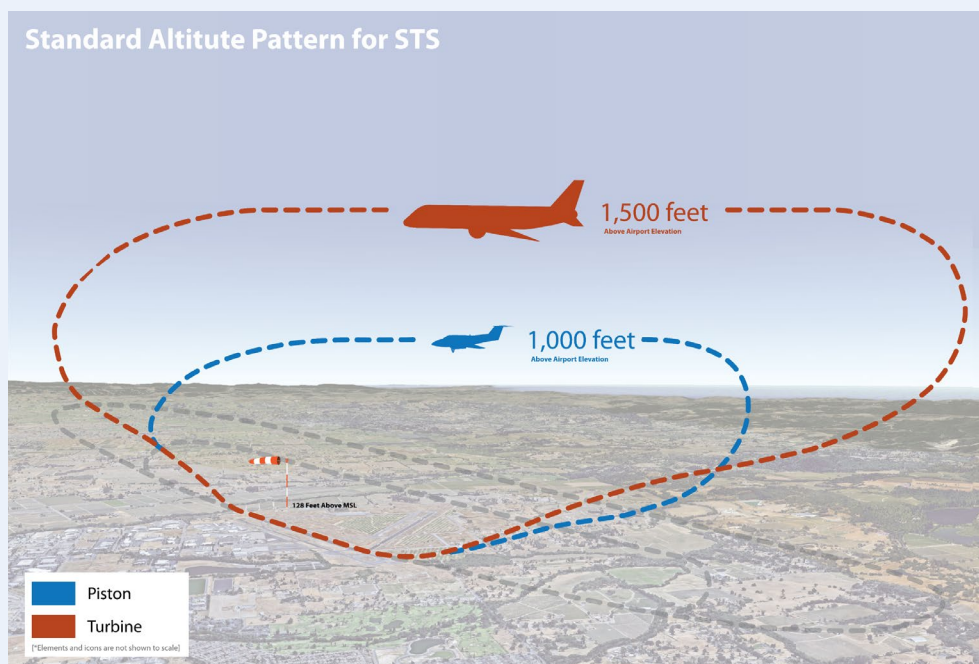


| Recorded Altitude Range             | Recorded Altitudes                             |
|-------------------------------------|--|
| Under 1,000 feet<br>(10 aircraft)   | 71, 71, 166, 171, 626, 631, 631, 721, 831, 966 |
| 1,000 to 1,499 feet<br>(6 aircraft) | 1,026, 1,071, 1,121, 1,146, 1,171, 1,486       |
| 1,500 to 1,999 feet<br>(3 aircraft) | 1,671, 1,791, 1,791                            |
| Over 2,000 feet<br>(3 aircraft)     | 2,771, 4,061, 4,926                            |

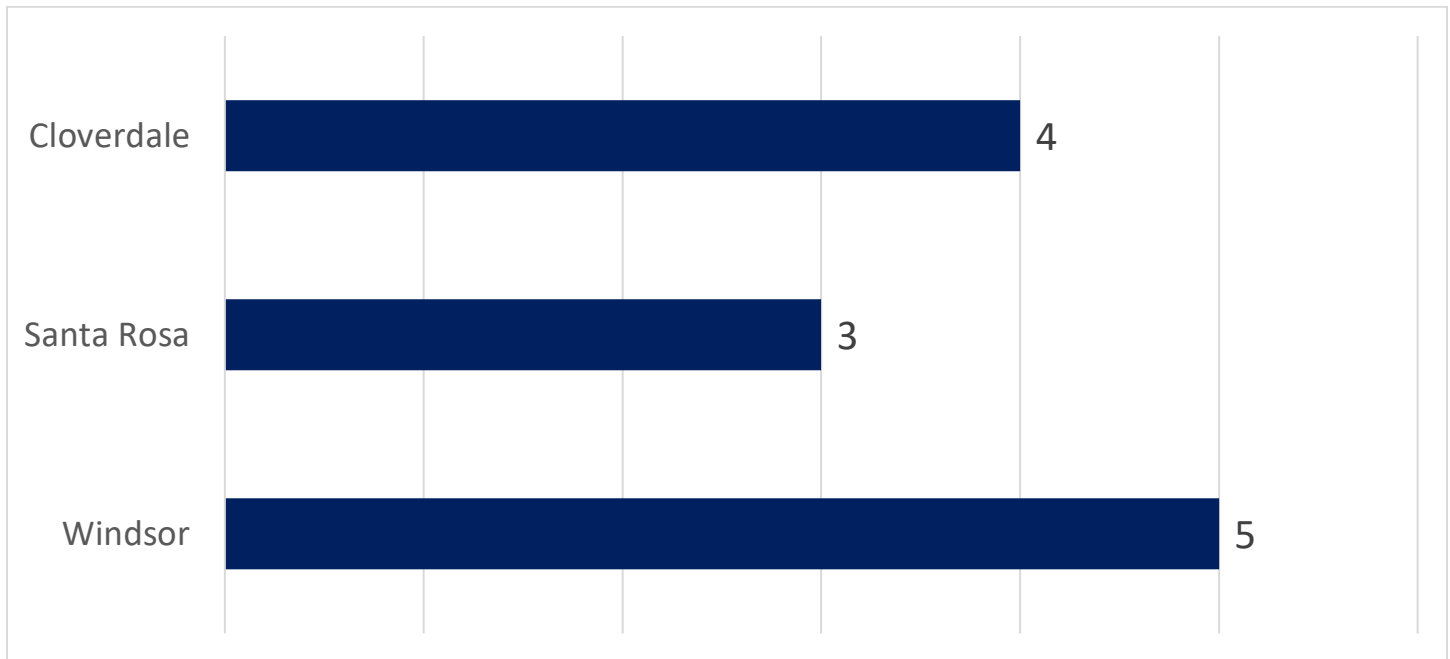
**55% flying at an altitude over 1,000 feet**

## What are the altitude requirements for aircraft landing at or taking off from the Airport?

The Airport’s standard altitude pattern is the highest allowed by the FAA. Under FAA regulations, altitude restrictions are not applicable during landing and takeoff. The FAA has exclusive sovereignty of airspace in the United States (49 U.S.C. Section 40103(a)).



# Originating Locations of Complaints

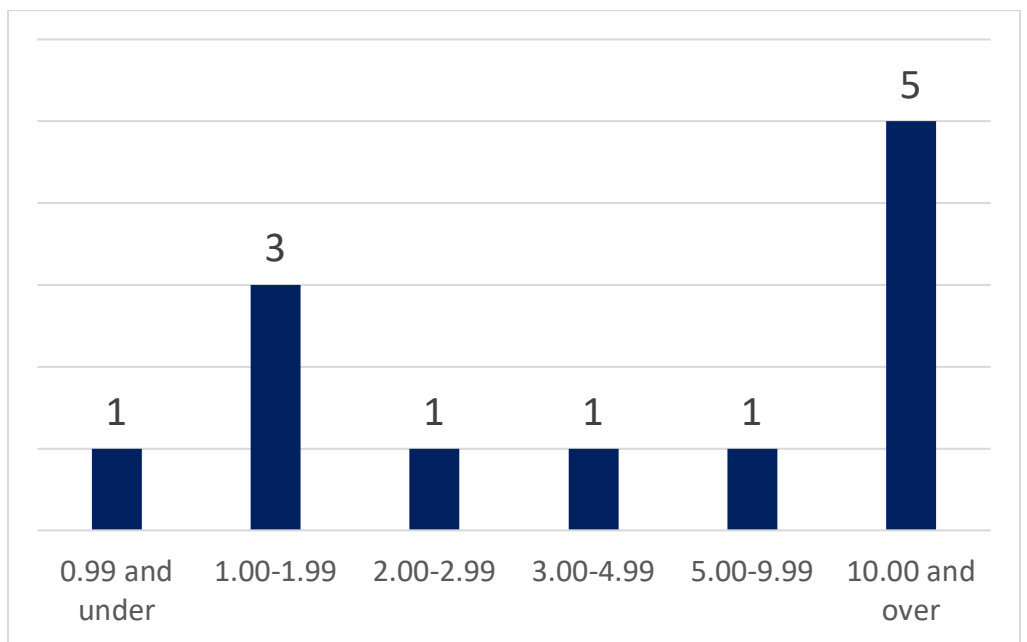


*This graph reflects the locations of unique complainants this month.*

## Why are aircraft flying over my house?

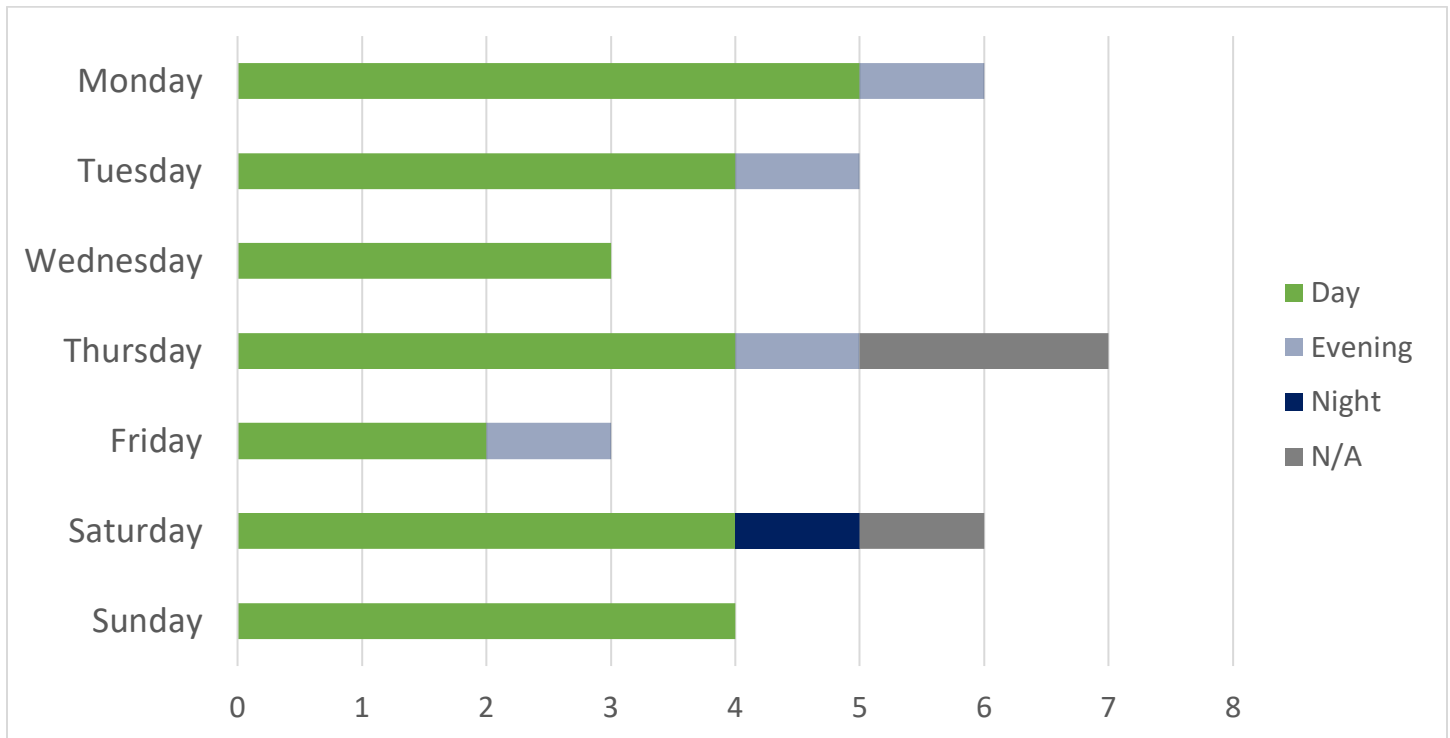
The FAA directs traffic into and out of the Airport. Flights are directed to the safest pattern depending on the amount of air traffic and prevailing winds at the time of arrival or departure. Safety is the FAA’s first consideration. However, aircraft can and do fly over all parts of Sonoma County. Sonoma County does not contain any No Fly Zones.

## Distance of Originating Complaint Locations from STS (in nautical miles)



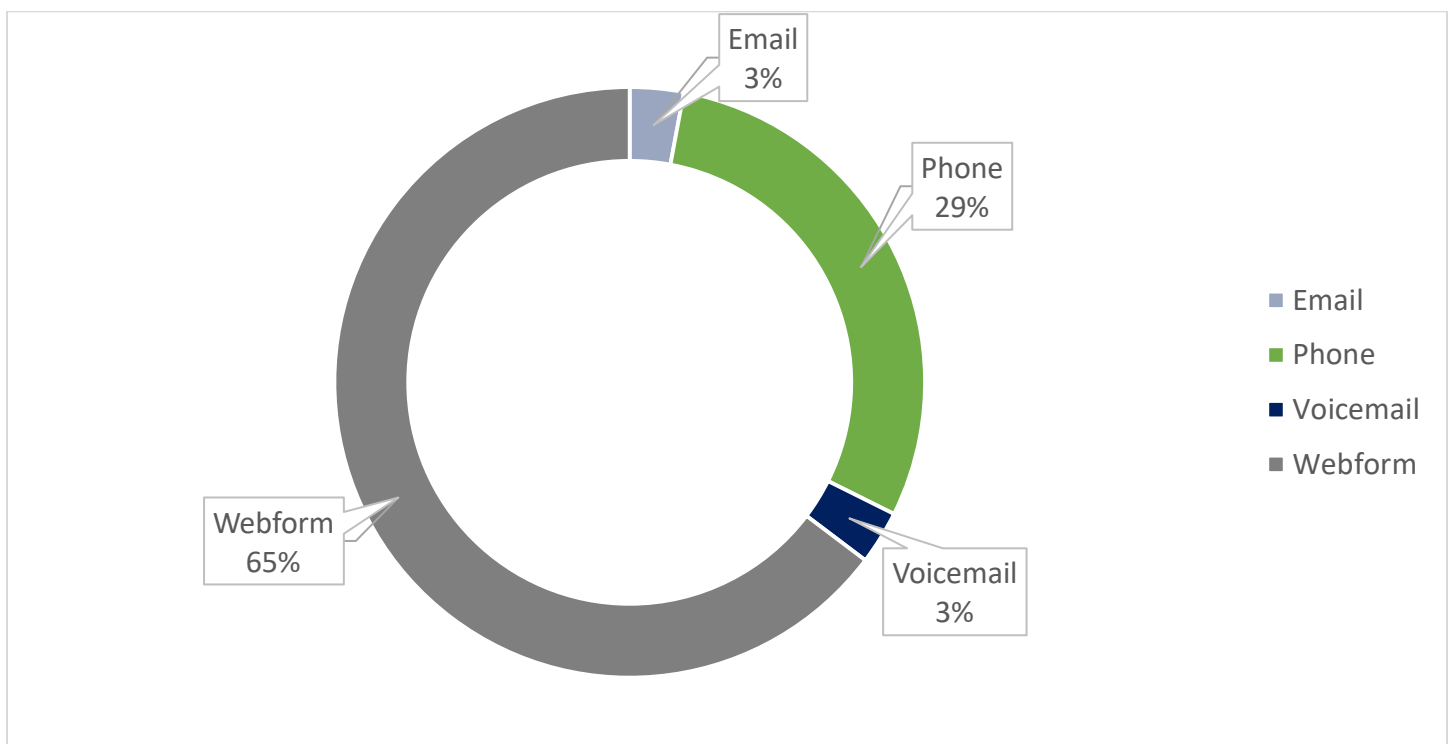
*This graph reflects the distance between the Airport and the addresses of unique complainants who made complaints this month in nautical miles (NM).*

## Days and Times Complaints Were Generated



Day = 7:00 AM to 5:59 PM, evening = 6:00 PM to 9:59 PM, night = 10:00 PM to 6:59 AM.

## Method by Which Complaints Were Received





## Year-to-Date Operations and Complaints

| Month         | 2020 Total Operations | 2020 Airline Operations | 2020 Complaints | 2019 Total Operations | 2019 Airline Operations | 2019 Complaints |
|---------------|-----------------------|-------------------------|-----------------|-----------------------|-------------------------|-----------------|
| January       | 6,244                 | 671                     | 28              | 5,860                 | 520                     | 6               |
| February      | 6,607                 | 648                     | 58              | 5,035                 | 452                     | 6               |
| March         | 5,365                 | 700                     | 84              | 6,869                 | 563                     | 11              |
| April         | 3,615                 | 259                     | 63              | 7,139                 | 569                     | 26              |
| May           | 3,862                 | 203                     | 98              | 6,918                 | 668                     | 23              |
| June          | 5,409                 | 266                     | 102             | 8,807                 | 750                     | 63              |
| July          | 5,606                 | 457                     | 227             | 8,947                 | 836                     | 31              |
| August        | 5,163                 | 455                     | 145             | 8,293                 | 867                     | 38              |
| September     | 4,961                 | 503                     | 43              | 7,597                 | 873                     | 62              |
| October       | 7,294                 | 528                     | 57              | 6,905                 | 713                     | 25              |
| November      | 6,673                 | 494                     | 58              | 6,596                 | 699                     | 14              |
| December      | 5,767                 | 453                     | 34              | 4,768                 | 735                     | 22              |
| <b>Totals</b> | <b>66,566</b>         | <b>5,637</b>            | <b>997</b>      | <b>83,734</b>         | <b>8,245</b>            | <b>327</b>      |

## Year-to-Date Activities Identified Through Complaints\*

| Month         | Alaska Airlines | American Airlines | United Airlines | Other Jet  | Helicopter | Turboprop | General Aviation | Military |
|---------------|-----------------|-------------------|-----------------|------------|------------|-----------|------------------|----------|
| January       | 14              | 2                 | 0               | 5          | 2          | 2         | 0                | 0        |
| February      | 26              | 6                 | 0               | 10         | 2          | 1         | 3                | 0        |
| March         | 54              | 4                 | 0               | 5          | 0          | 2         | 2                | 0        |
| April         | 13              | 6                 | 0               | 9          | 1          | 5         | 5                | 0        |
| May           | 19              | 6                 | 1               | 16         | 5          | 10        | 23               | 0        |
| June          | 8               | 7                 | 2               | 18         | 13         | 10        | 19               | 0        |
| July          | 69              | 14                | 7               | 28         | 12         | 17        | 39               | 5        |
| August        | 42              | 5                 | 1               | 18         | 8          | 9         | 29               | 0        |
| September     | 26              | 3                 | 1               | 4          | 4          | 4         | 0                | 0        |
| October       | 31              | 5                 | 1               | 6          | 1          | 4         | 5                | 0        |
| November      | 15              | 3                 | 0               | 3          | 15         | 4         | 8                | 0        |
| December      | 6               | 1                 | 0               | 0          | 7          | 4         | 13               | 1        |
| <b>Totals</b> | <b>323</b>      | <b>62</b>         | <b>13</b>       | <b>122</b> | <b>70</b>  | <b>72</b> | <b>146</b>       | <b>6</b> |

\*Complaints may be correlated to more than one Operation (arrival or departure from the Airport) or may not be correlated to an Operation or aircraft.

# Contact the Charles M. Schulz – Sonoma County Airport

**To learn more about Noise Abatement at the Airport or submit a noise complaint:**

<https://sonomacountyairport.org/business-and-community/aircraft-complaints-and-flight-traffic/>

Or call our hotline (707) 565-4515

Complaint submission tips:

Provide as much information as possible, including date, time, and, if possible, a description of the aircraft. Include the reason for your complaint.

**To submit a general comment:**

Visit <https://sonomacountyairport.org/about-sts/contact/>