



Charles M. Schulz – Sonoma County Airport
2290 Airport Boulevard
Santa Rosa, CA 95403
Ph: 707.565.7243 Fax: 707.542.5303
www.sonomacountyairport.org

Charles M. Schulz – Sonoma County Airport (STS)

Aircraft Noise Monthly Report

January 2020



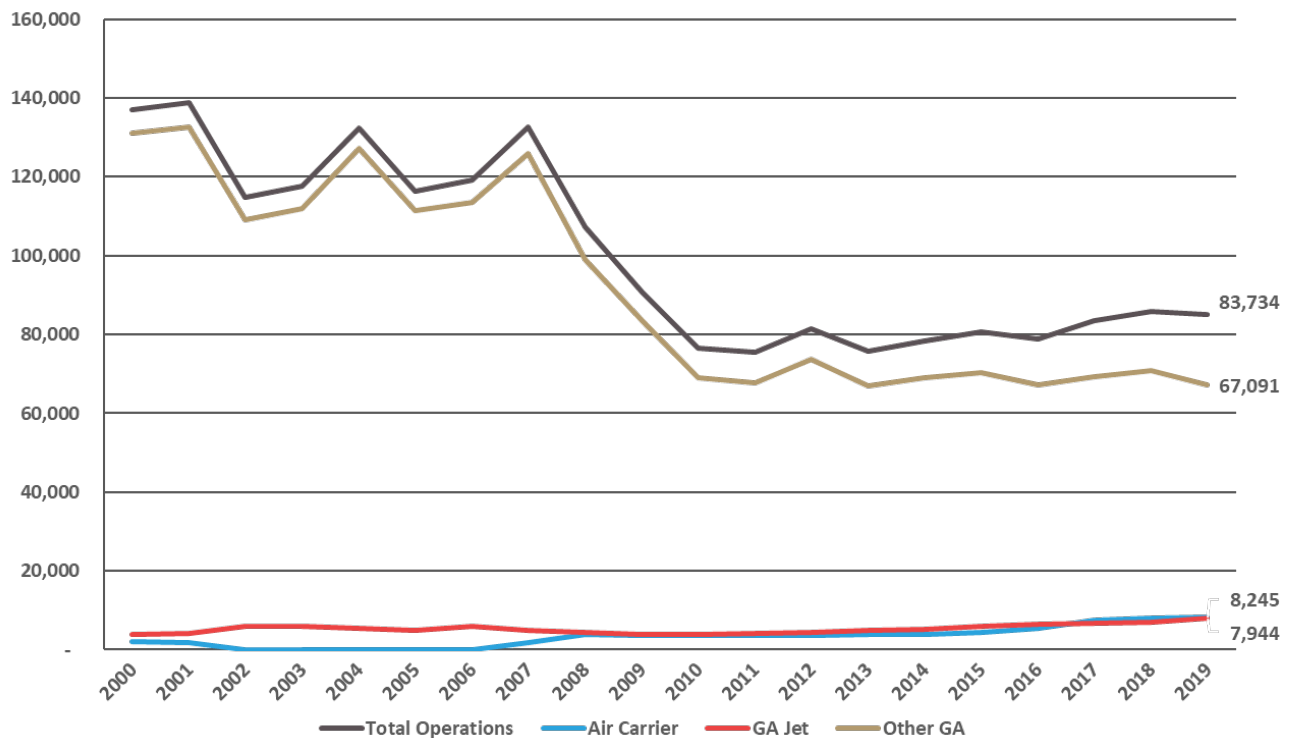
About the Charles M. Schulz – Sonoma County Airport and Noise Abatement

The Airport operates as a self-supporting Enterprise Fund within the Department of Transportation and Public Works and under the jurisdiction of the Federal Aviation Administration (FAA). STS is both a general aviation facility, serving private planes and business jets, and is a commercial airline facility with scheduled air service. STS generates over \$1,300,000 annually in tax revenues, via its users, for Sonoma County and County School Districts.

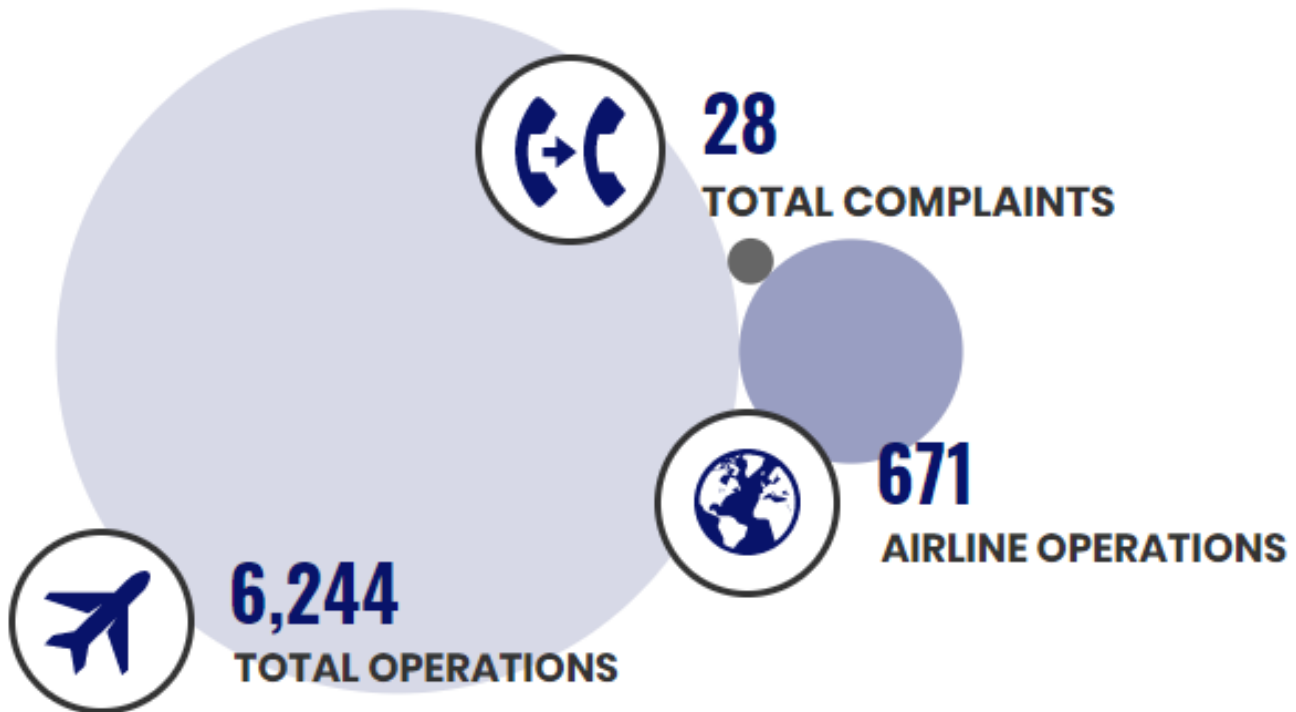
The Airport’s current Noise Abatement Program was established in 1988. STS also works within FAA guidelines, to encourage pilots and airlines to fly with consideration of our neighbors in mind. The Airport makes every effort to promote flight procedures that minimize aircraft noise while always maintaining safety as the highest priority. It is the FAA’s sole responsibility to develop air traffic rules, assign the use of airspace, and control air traffic.

STS is working with our Aviation Commission and a community advisory group to re-write the Airport’s Noise Abatement Guide and associated procedures. Using flight-tracking and noise management software, the Airport also provides monthly complaint reports to airlines so that operators can use real data to update flight practices and fly friendly.

STS Historical Operations



This Month's Operations



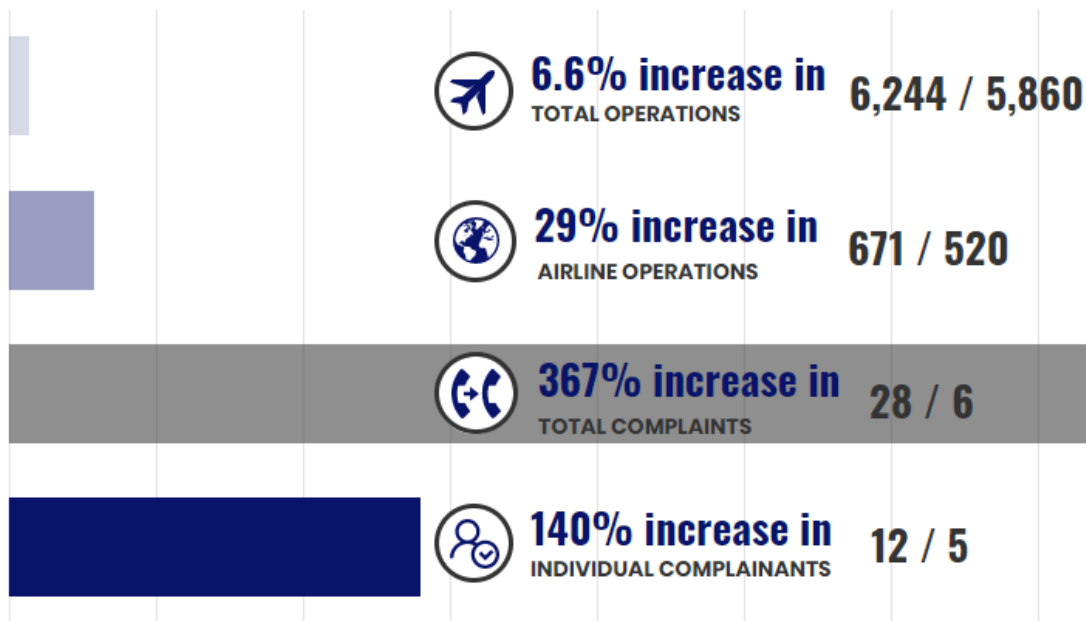
This Month's Noise Complaints At-A-Glance



- 28 Noise Complaints received
- 12 Individual Complainants
- 24 Correlated Operations*
- 5 Complaints that were non-specific or unable to be correlated to a flight track/aircraft

**An Operation is a departure from or an arrival to the Airport.*

What's Changed This Year? January 2020 vs. 2019



Airlines and Operators Identified Through Complaints



Alaska Airlines and American Airlines operate jet aircraft. This graph does not include complaints which were unable to be correlated to a flight track/aircraft.

Aircraft Operated by Airlines at STS

Alaska Airlines
E175 (76 seats)



American Airlines
E175 (76 seats)



United Airlines
CRJ200 (50 seats)



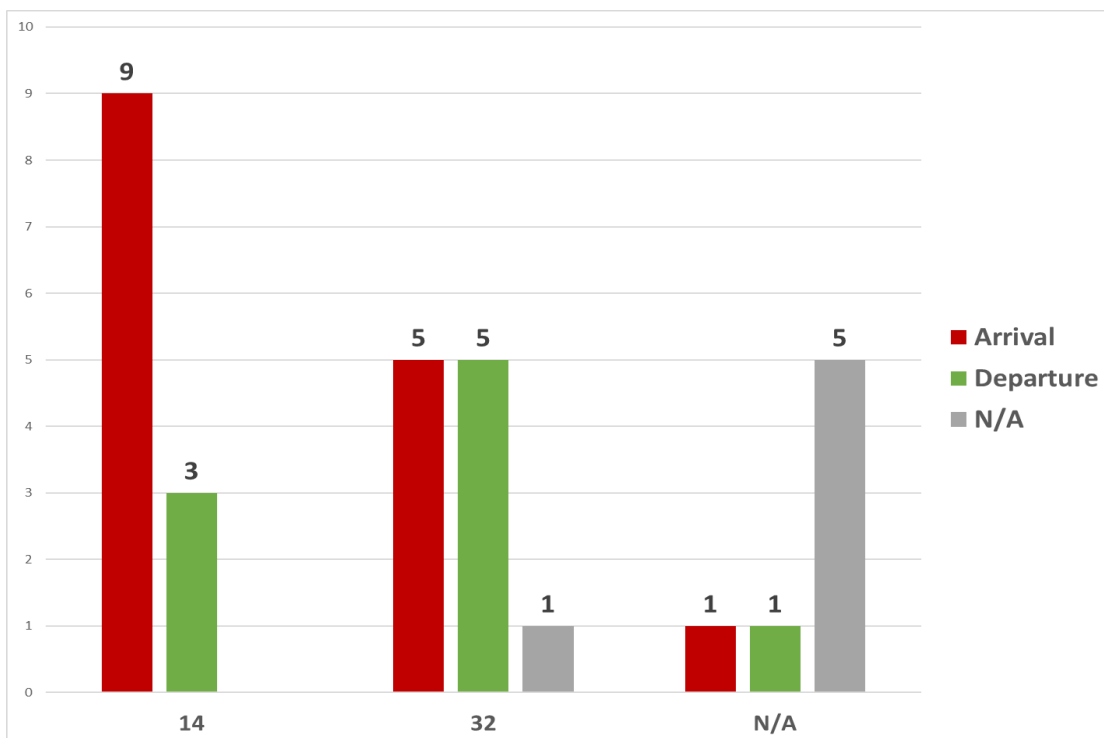
CRJ700 (65-76 seats)



CRJ900 (76-79 seats)



Identified Aircraft by Operation, Runway



Aircraft Altitudes

There were 24 aircraft identified through complaints made in January 2020. At the point of closest approach (PCA) to the complainant's address, altitude was recorded (in feet).

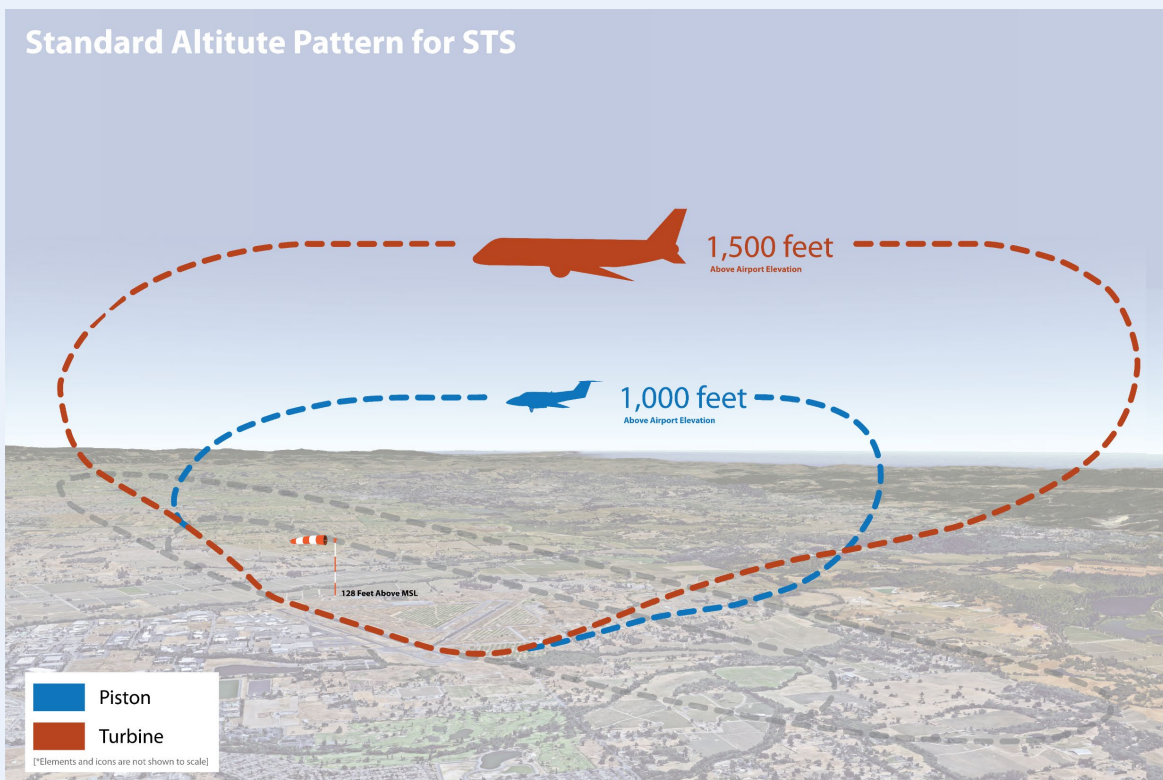
Recorded altitudes were as follows:

- 6 aircraft at or below 1,000 feet as follows: 610, 665, 790, 800, 835, 845 feet
- 2 aircraft between 1,000 and 1,500 feet
- 7 aircraft between 1,500 and 2,000 feet
- 8 aircraft over 2,000 feet

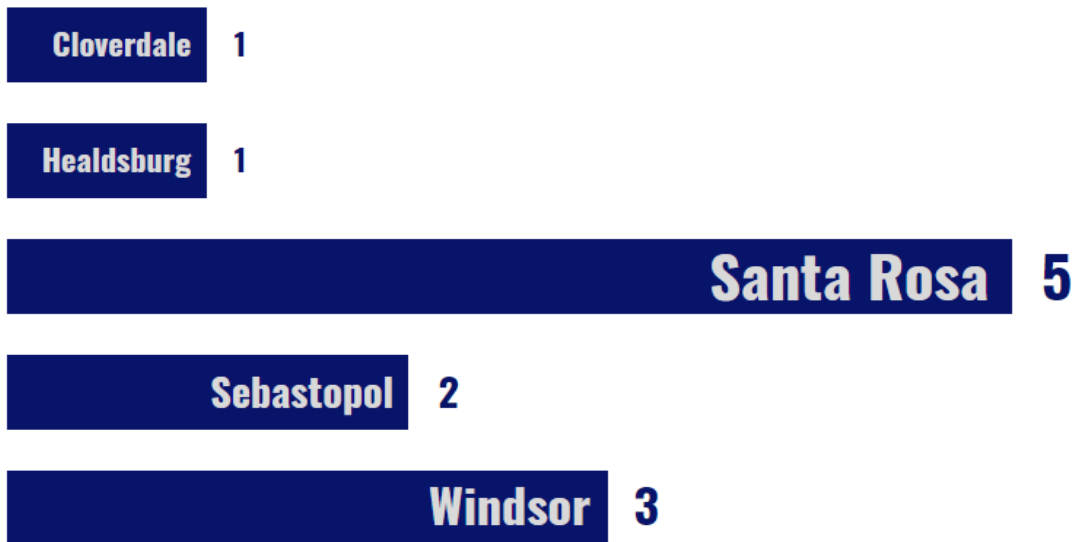


What are the altitude requirements for aircraft landing at or taking off from the Airport?

The Airport's standard altitude pattern is the highest allowed by the FAA. Under FAA regulations, altitude restrictions are not applicable during landing and takeoff. The FAA has exclusive sovereignty of airspace in the United States (49 U.S.C. Section 40103(a)).



Originating Locations of Complaints

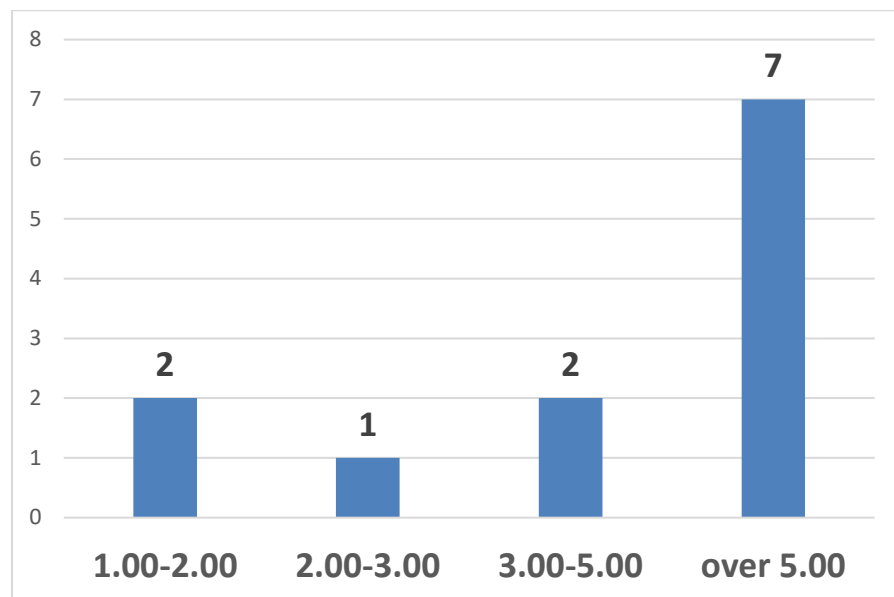


This graph reflects the unique addresses from which the Airport received complaints this month.

Why are aircraft flying over my house?

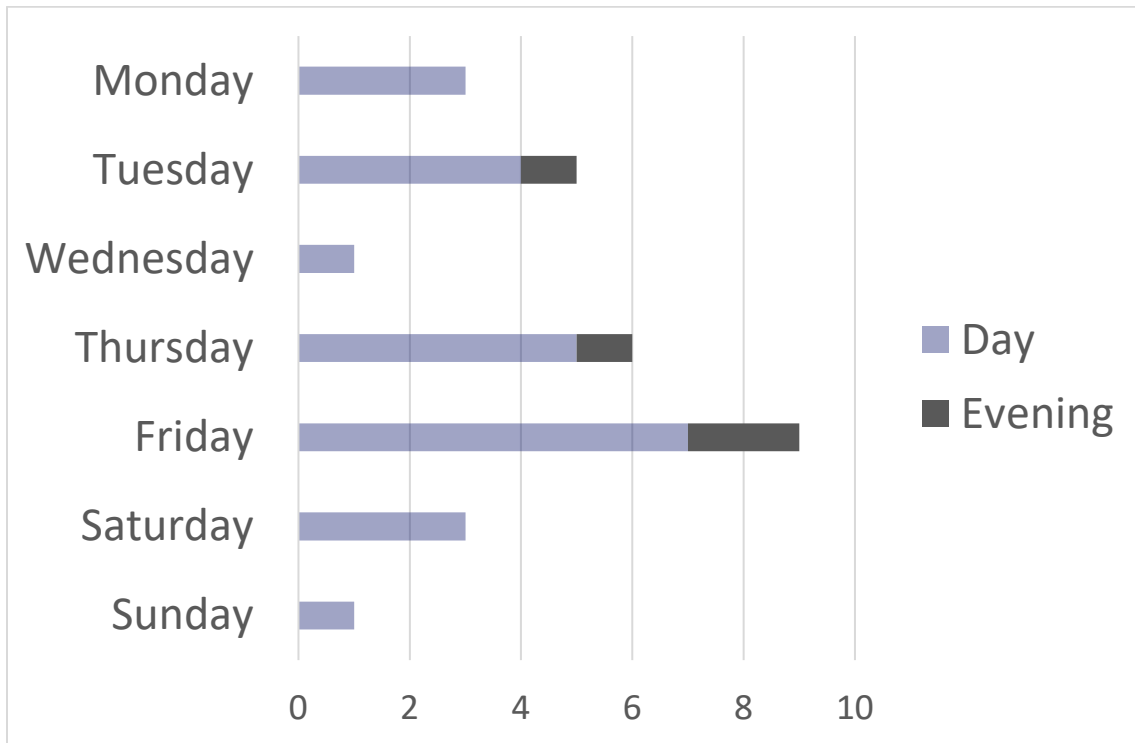
The FAA directs traffic into and out of the Airport. Flights are directed to the safest pattern depending on the amount of air traffic and prevailing winds at the time of arrival or departure. Safety is the FAA’s first consideration. However, aircraft can and do fly over all parts of Sonoma County. Sonoma County does not contain any No Fly Zones.

Distance in Nautical Miles (NM) of Originating Complaint Locations from STS



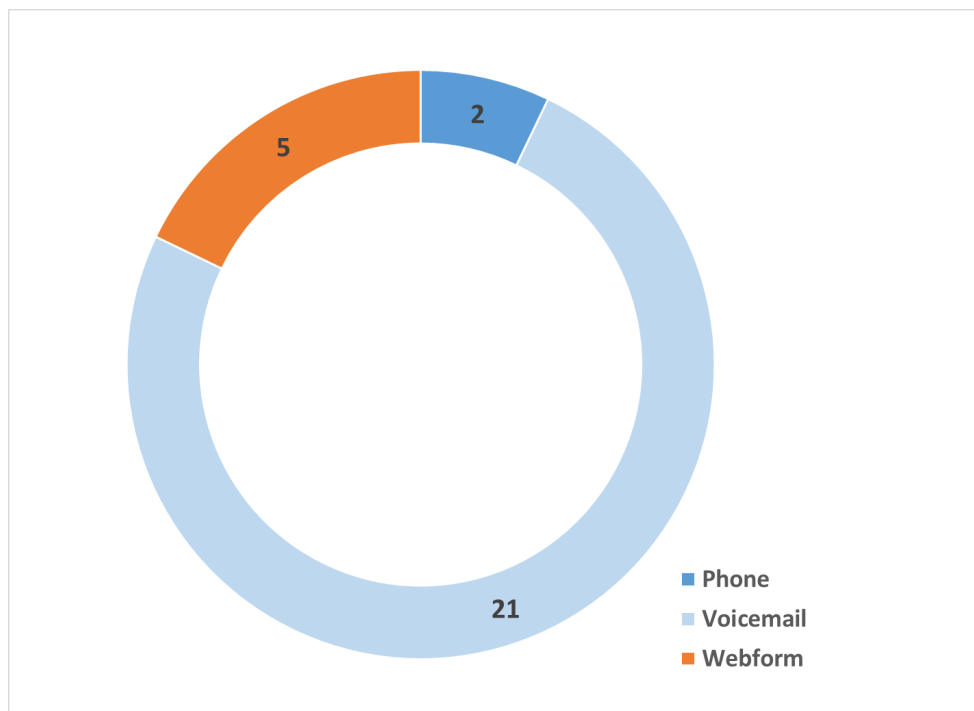
This graph reflects the distance between the Airport and the unique addresses from which complaints were received this month in nautical miles (NM).

Days and Times Complaints Were Received



Day = 6:00 AM to 6:00 PM, evening = 6:00 PM to 10:00 PM, night = 10:00 PM to 6:00 AM.

Method by which Complaints Were Received



Contact the Charles M. Schulz – Sonoma County Airport

To learn more about Noise Abatement at the Airport or submit a noise complaint:

<https://sonomacountyairport.org/business-and-community/aircraft-complaints-and-flight-traffic/>

Or call our hotline (707) 565-4515

Complaint submission tips:

Provide as much information as possible, including date, time, and, if possible, a description of the aircraft. Include the reason for your complaint.

To submit a general comment:

Visit <https://sonomacountyairport.org/about-sts/contact/>