



Charles M. Schulz – Sonoma County Airport
2290 Airport Boulevard
Santa Rosa, CA 95403
Ph: 707.565.7243
www.sonomacountyairport.org

Charles M. Schulz – Sonoma County Airport (STS)

Aircraft Noise Monthly Report

May 2020



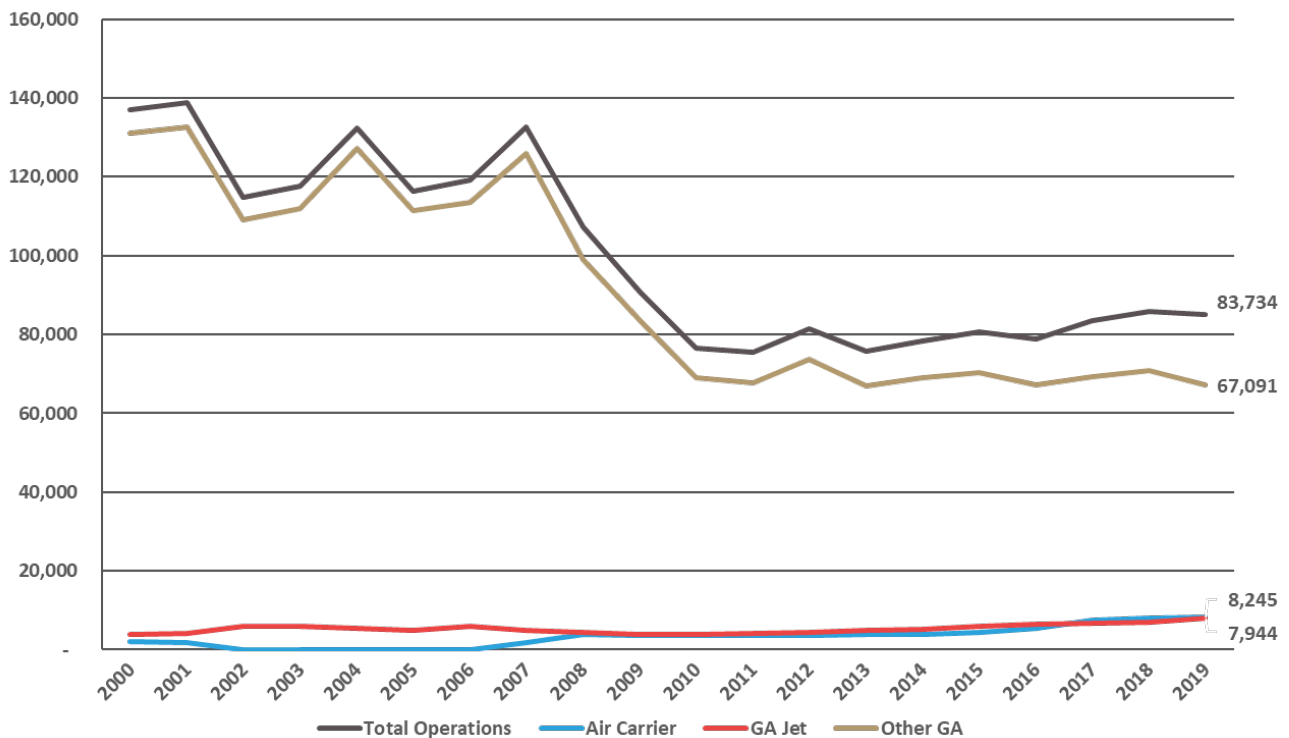
About the Charles M. Schulz – Sonoma County Airport and Noise Abatement

The Airport operates as a self-supporting Enterprise Fund within the Department of Transportation and Public Works and under the jurisdiction of the Federal Aviation Administration (FAA). STS is both a general aviation facility, serving private planes and business jets, and is a commercial airline facility with scheduled air service. STS generates over \$1,300,000 annually in tax revenues, via its users, for Sonoma County and County School Districts.

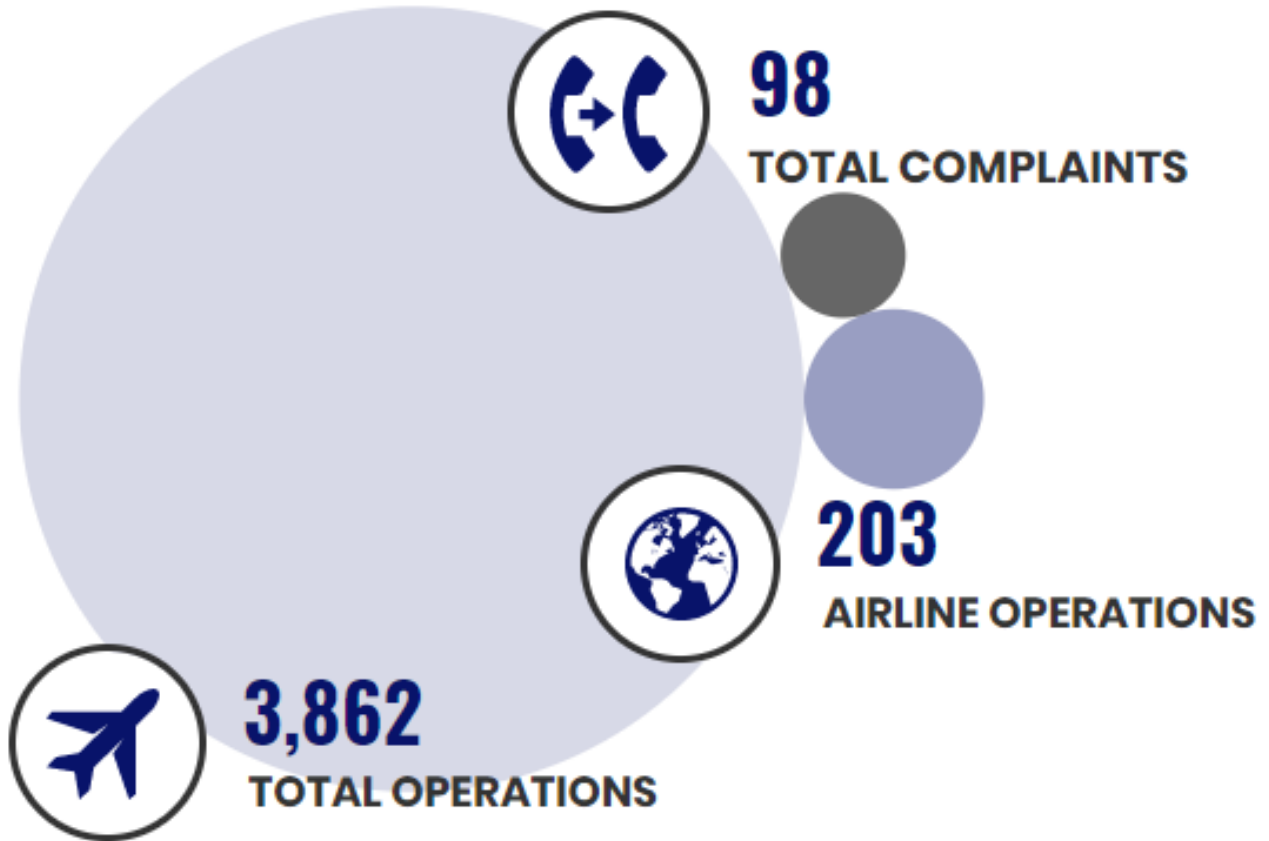
The Airport’s current Noise Abatement Program was established in 1988. STS also works within FAA guidelines, to encourage pilots and airlines to fly with consideration of our neighbors in mind. The Airport makes every effort to promote flight procedures that minimize aircraft noise while always maintaining safety as the highest priority. It is the FAA’s sole responsibility to develop air traffic rules, assign the use of airspace, and control air traffic.

STS is working with our Aviation Commission and a community advisory group to re-write the Airport’s Noise Abatement Guide and associated procedures. Using flight-tracking and noise management software, the Airport also provides monthly complaint reports to airlines so that operators can use real data to update flight practices and fly friendly.

STS Historical Operations



This Month's Operations



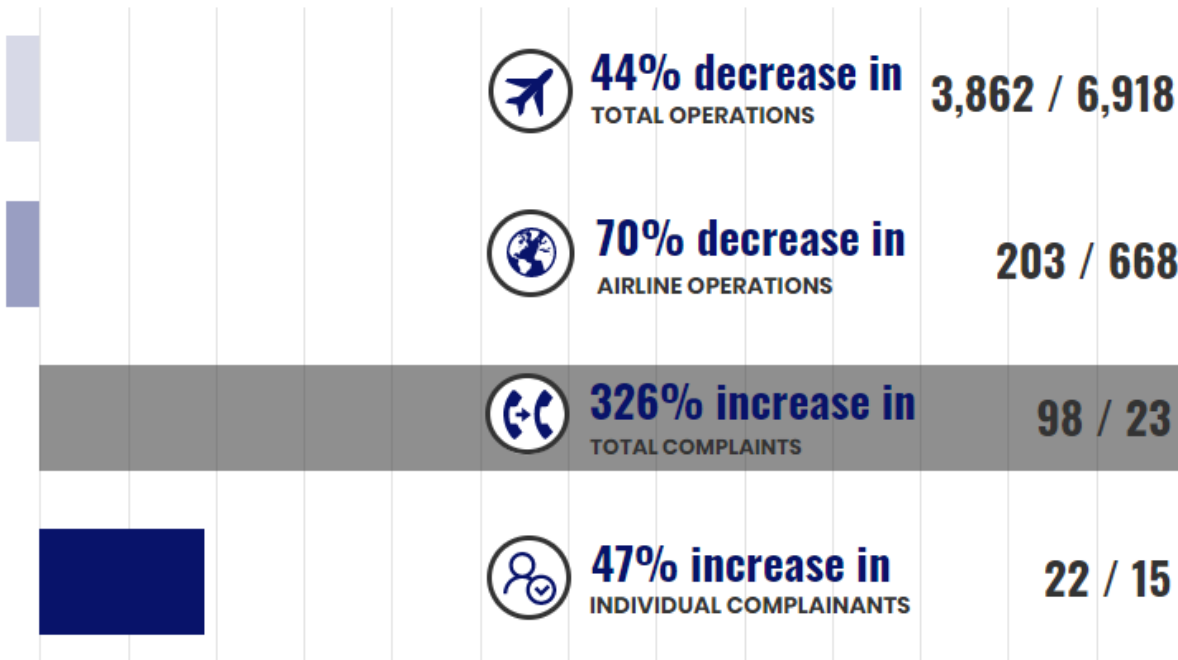
This Month's Noise Complaints At-A-Glance



- 98 Noise Complaints received
- 22 Individual Complainants
- 45 Complaints received from one individual
- 12 New Complainants
- 80 Correlated Operations*
- 20 Complaints that were non-specific or unable to be correlated to a flight track/aircraft

**An Operation is a departure from or an arrival to the Airport. Complaints may be correlated to more than one Operation or may not be correlated to an Operation.*

What's Changed This Year? May 2020 vs. 2019



Airlines and Operators Identified Through Complaints



Alaska Airlines, American Airlines, and United Airlines operate jet aircraft. This graph does not include complaints which did not include an aircraft description and were unable to be correlated to a flight track/aircraft.

Aircraft Operated by Airlines at STS

Alaska Airlines
E175 (76 seats)



American Airlines
E175 (76 seats)



United Airlines
CRJ200 (50 seats)



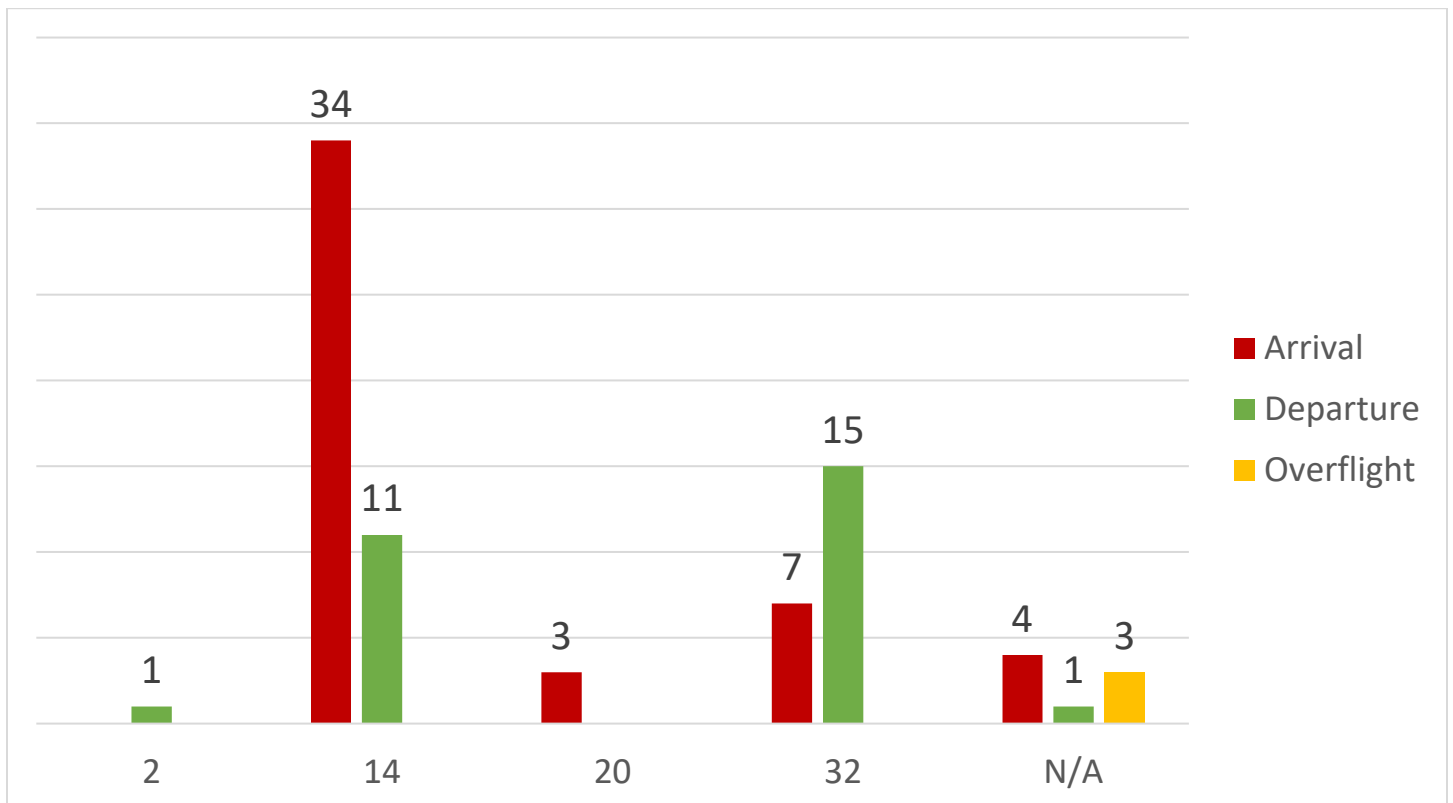
CRJ700 (65-76 seats)



CRJ900 (76-79 seats)

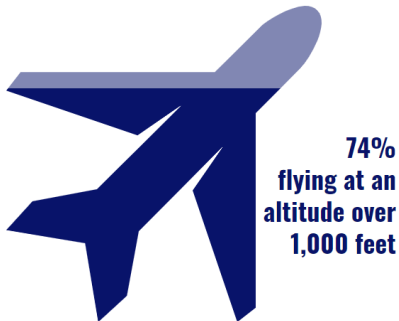


Identified Aircraft by Operation, Runway



Aircraft Altitudes

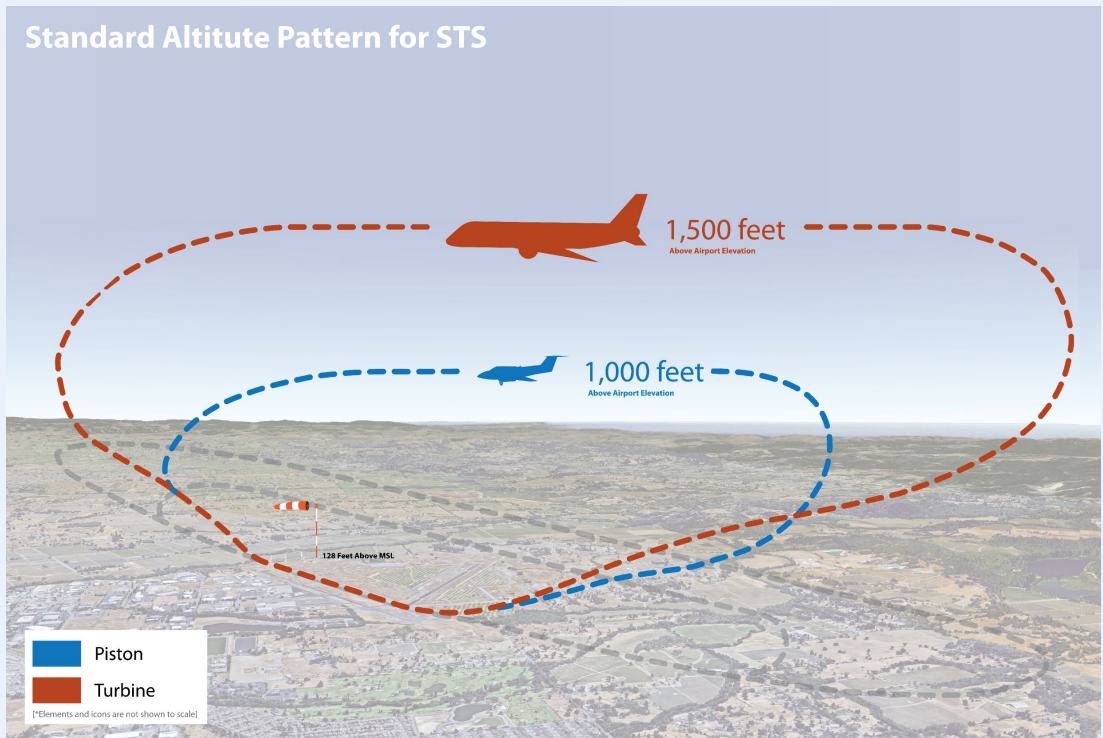
There were 78 aircraft with tracked altitudes identified through complaints made in May 2020. At the point of closest approach (PCA) to the complainant’s address, altitude was recorded (in feet).



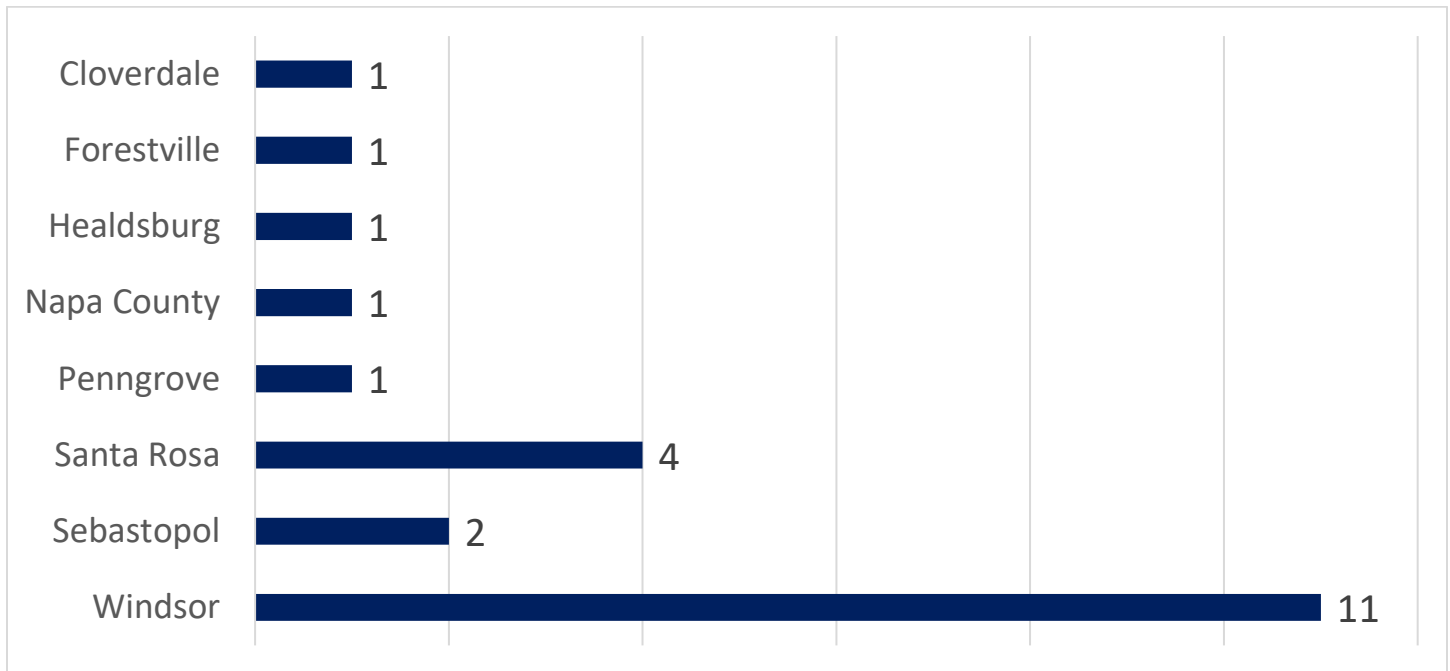
Recorded Altitude Range	Recorded Altitudes
Under 1,000 feet (20 aircraft)	300, 300, 375, 675, 745, 815, 820, 820, 825, 830, 850, 865, 865, 895, 910, 910, 925, 930, 945, 960
1,000 to 1,499 feet (8 aircraft)	1,020, 1,035, 1,040, 1,150, 1,175, 1,215, 1,235, 1,350
1,500 to 1,999 feet (14 aircraft)	1,525, 1,580, 1,650, 1,695, 1,700, 1,730, 1,810, 1,815, 1,815, 1,895, 1,950, 1,950, 1,955, 1,955
Over 2,000 feet (36 aircraft)	2,005, 2,040, 2,050, 2,060, 2,065, 2,075, 2,145, 2,200, 2,320, 2,340, 2,400, 2,400, 2,415, 2,425, 2,425, 2,555, 2,605, 2,675, 2,880, 2,900, 2,940, 3,335, 3,425, 3,475, 3,555, 3,750, 3,765, 3,810, 3,820, 4,080, 4,295, 4,300, 4,360, 4,365, 4,400, 4,990

What are the altitude requirements for aircraft landing at or taking off from the Airport?

The Airport’s standard altitude pattern is the highest allowed by the FAA. Under FAA regulations, altitude restrictions are not applicable during landing and takeoff. The FAA has exclusive sovereignty of airspace in the United States (49 U.S.C. Section 40103(a)).



Originating Locations of Complaints

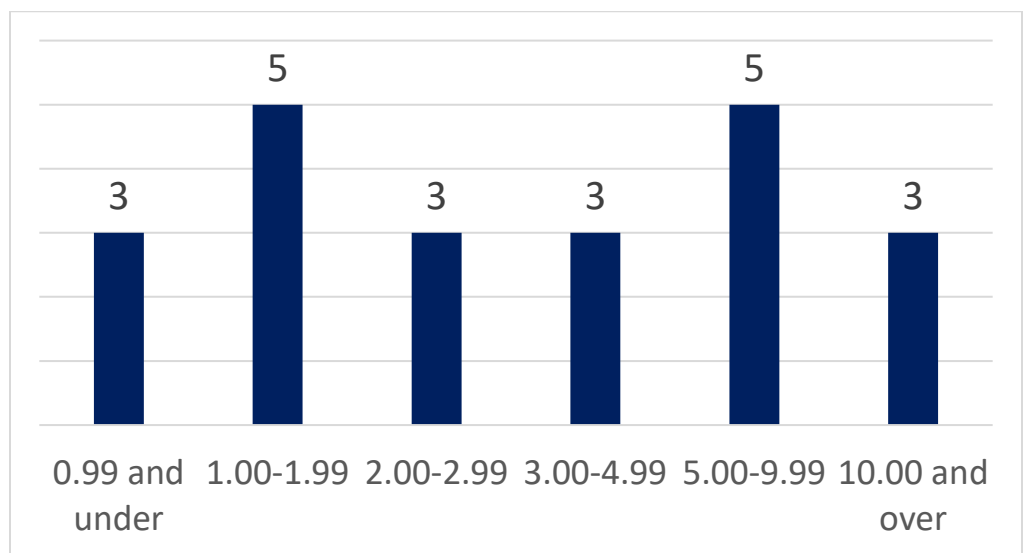


This graph reflects the locations of unique complainants this month.

Why are aircraft flying over my house?

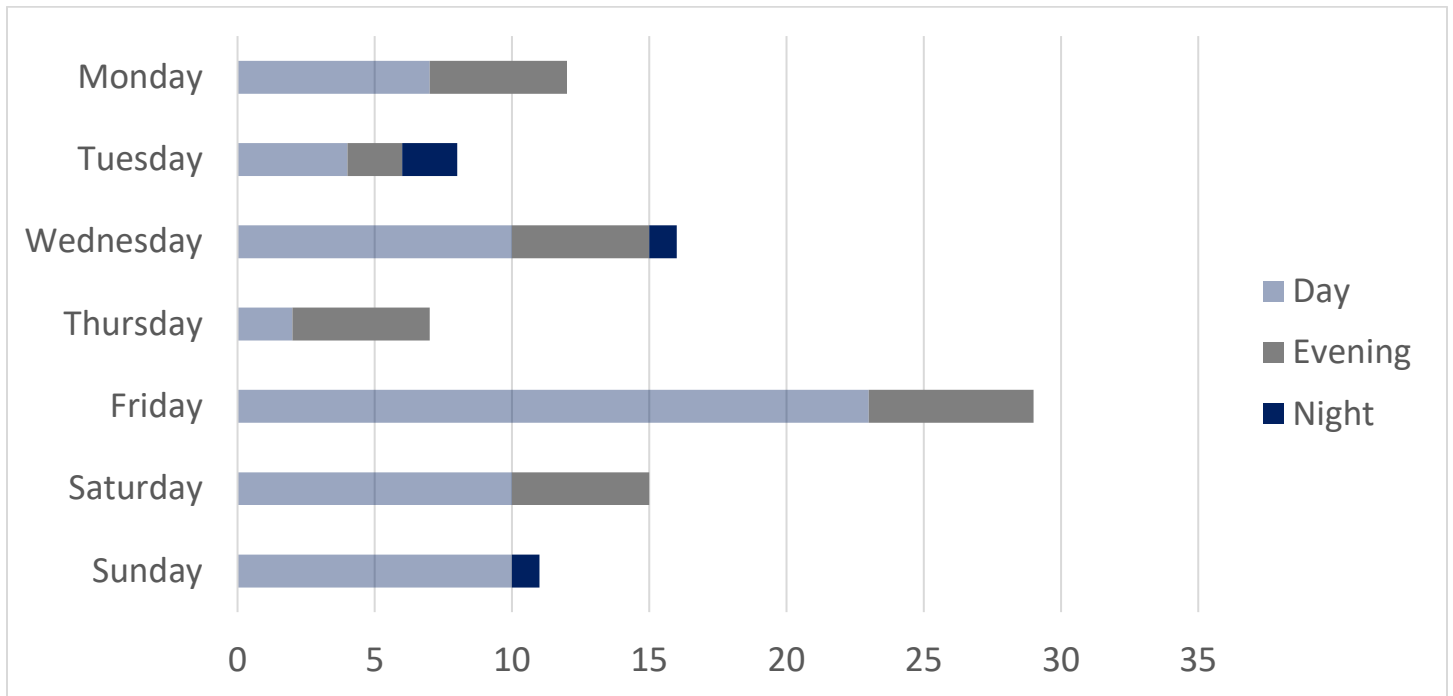
The FAA directs traffic into and out of the Airport. Flights are directed to the safest pattern depending on the amount of air traffic and prevailing winds at the time of arrival or departure. Safety is the FAA’s first consideration. However, aircraft can and do fly over all parts of Sonoma County. Sonoma County does not contain any No Fly Zones.

Distance in Nautical Miles (NM) of Originating Complaint Locations from STS



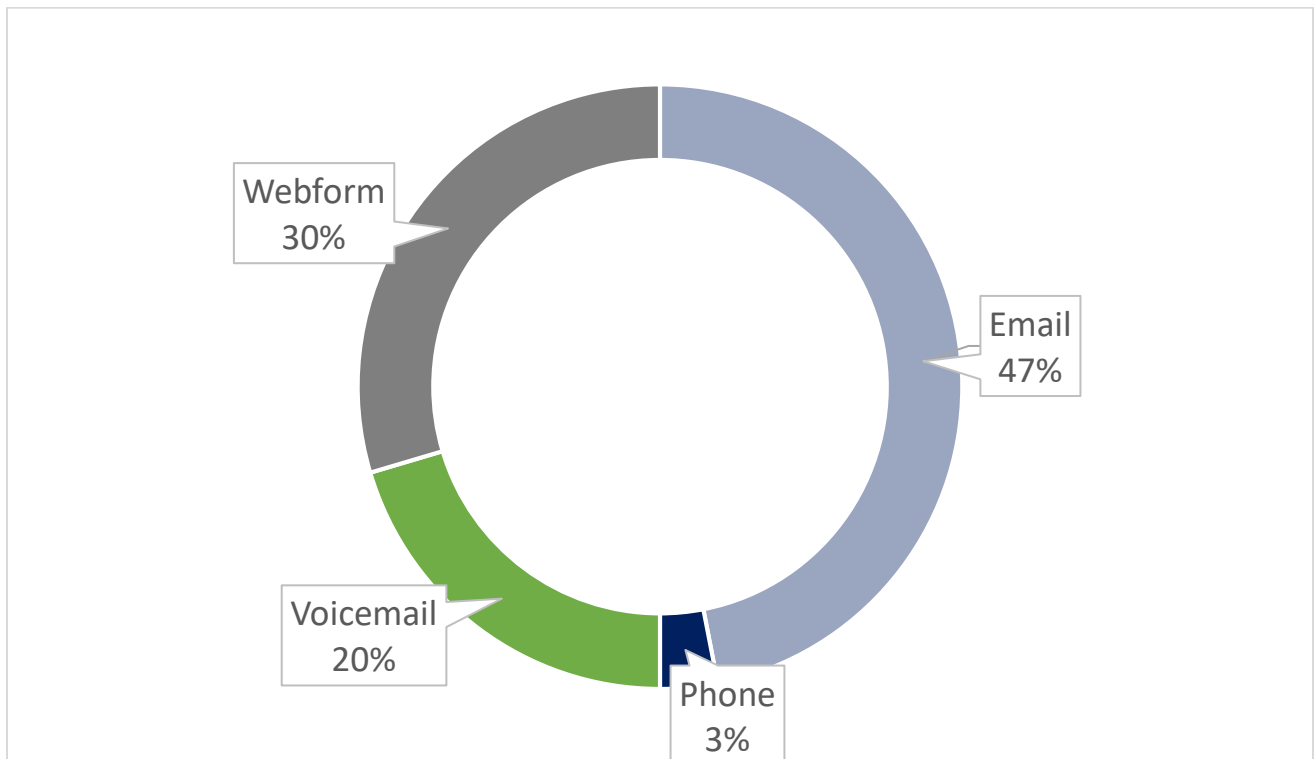
This graph reflects the distance between the Airport and the addresses of unique complainants who made complaints this month in nautical miles (NM).

Days and Times Complaints Were Received



Day = 7:00 AM to 5:59 PM, evening = 6:00 PM to 9:59 PM, night = 10:00 PM to 6:59 AM.

Method by Which Complaints Were Received



Year-to-Date Operations and Complaints

Month	2020 Total Operations	2020 Airline Operations	2020 Complaints	2019 Total Operations	2019 Airline Operations	2019 Complaints
January	6,244	671	28	5,860	520	6
February	6,607	648	58	5,035	452	6
March	5,365	700	84	6,869	563	11
April	3,615	259	63	7,139	569	26
May	3,862	203	98	6,918	668	23
Totals	25,693	2,481	331	31,821	2,772	72

Year-to-Date Activities Identified Through Complaints*

Month	Alaska Airlines	American Airlines	United Airlines	Other Jet	Helicopter	Turboprop	General Aviation
January	14	2	0	5	2	2	0
February	26	6	0	10	2	1	3
March	54	4	0	5	0	2	2
April	13	6	0	9	1	5	5
May	19	6	1	16	5	10	23
Totals	126	24	1	45	10	20	33

*Complaints may be correlated to more than one Operation (arrival or departure from the Airport) or may not be correlated to an Operation or aircraft.

Contact the Charles M. Schulz – Sonoma County Airport

To learn more about Noise Abatement at the Airport or submit a noise complaint:

<https://sonomacountyairport.org/business-and-community/aircraft-complaints-and-flight-traffic/>

Or call our hotline (707) 565-4515

Complaint submission tips:

Provide as much information as possible, including date, time, and, if possible, a description of the aircraft. Include the reason for your complaint.

To submit a general comment:

Visit <https://sonomacountyairport.org/about-sts/contact/>