



Charles M. Schulz – Sonoma County Airport
2290 Airport Boulevard
Santa Rosa, CA 95403
Ph: 707.565.7243
www.sonomacountyairport.org

Charles M. Schulz – Sonoma County Airport (STS)

Aircraft Noise Monthly Report

October 2020



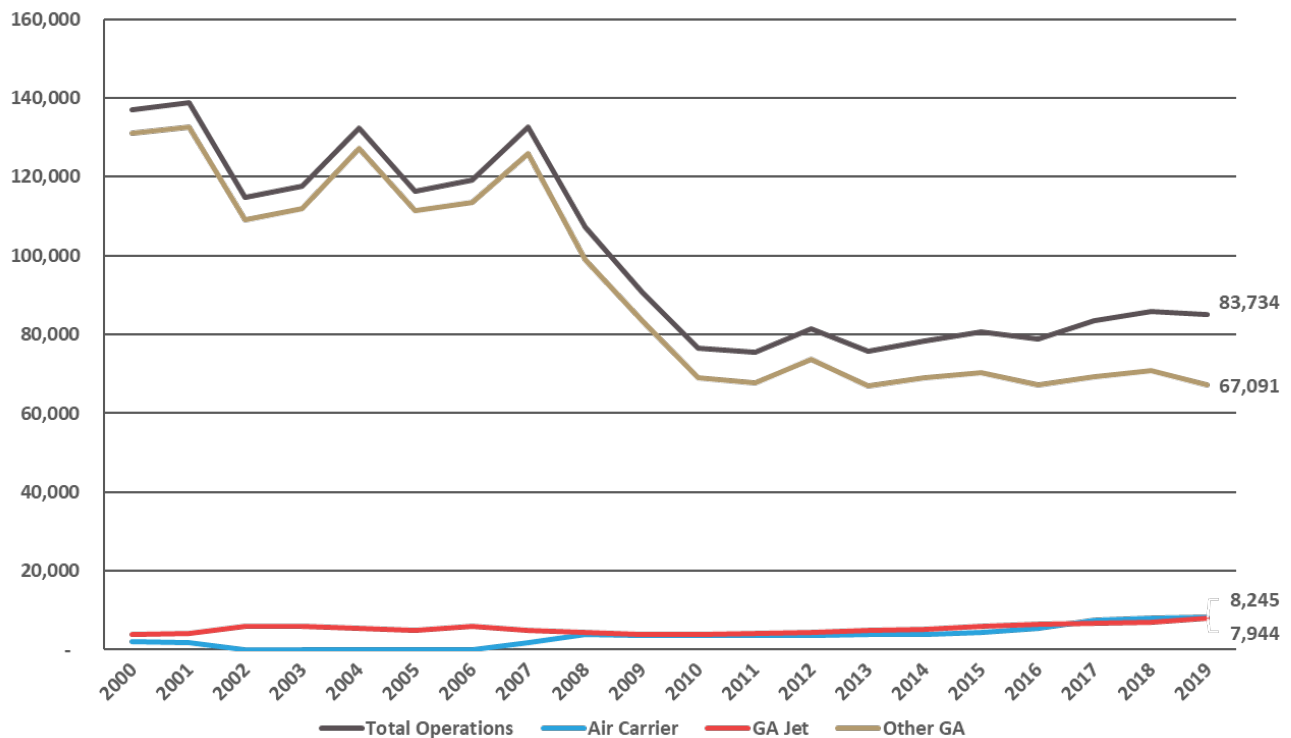
About the Charles M. Schulz – Sonoma County Airport and Noise Abatement

The Airport operates as a self-supporting Enterprise Fund within the Department of Transportation and Public Works and under the jurisdiction of the Federal Aviation Administration (FAA). STS is both a general aviation facility, serving private planes and business jets, and is a commercial airline facility with scheduled air service. STS generates over \$1,300,000 annually in tax revenues, via its users, for Sonoma County and County School Districts.

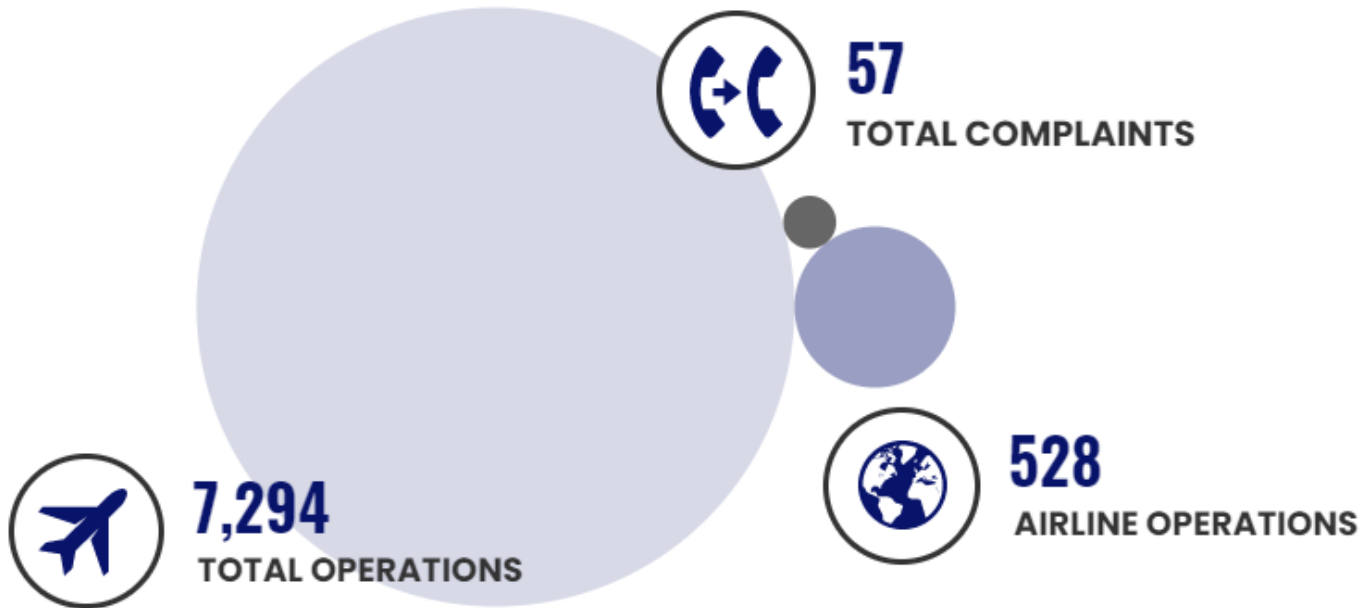
The Airport’s current Noise Abatement Program was established in 1988. STS also works within FAA guidelines, to encourage pilots and airlines to fly with consideration of our neighbors in mind. The Airport makes every effort to promote flight procedures that minimize aircraft noise while always maintaining safety as the highest priority. It is the FAA’s sole responsibility to develop air traffic rules, assign the use of airspace, and control air traffic.

STS is working with our Aviation Commission and a community advisory group to re-write the Airport’s Noise Abatement Guide and associated procedures. Using flight-tracking and noise management software, the Airport also provides monthly complaint reports to airlines so that operators can use real data to update flight practices and fly friendly.

STS Historical Operations



This Month's Operations



This Month's Noise Complaints At-A-Glance



- 57 Noise Complaints received
- 19 Individual Complainants



- 3 New Complainants
- 51 Correlated Operations*



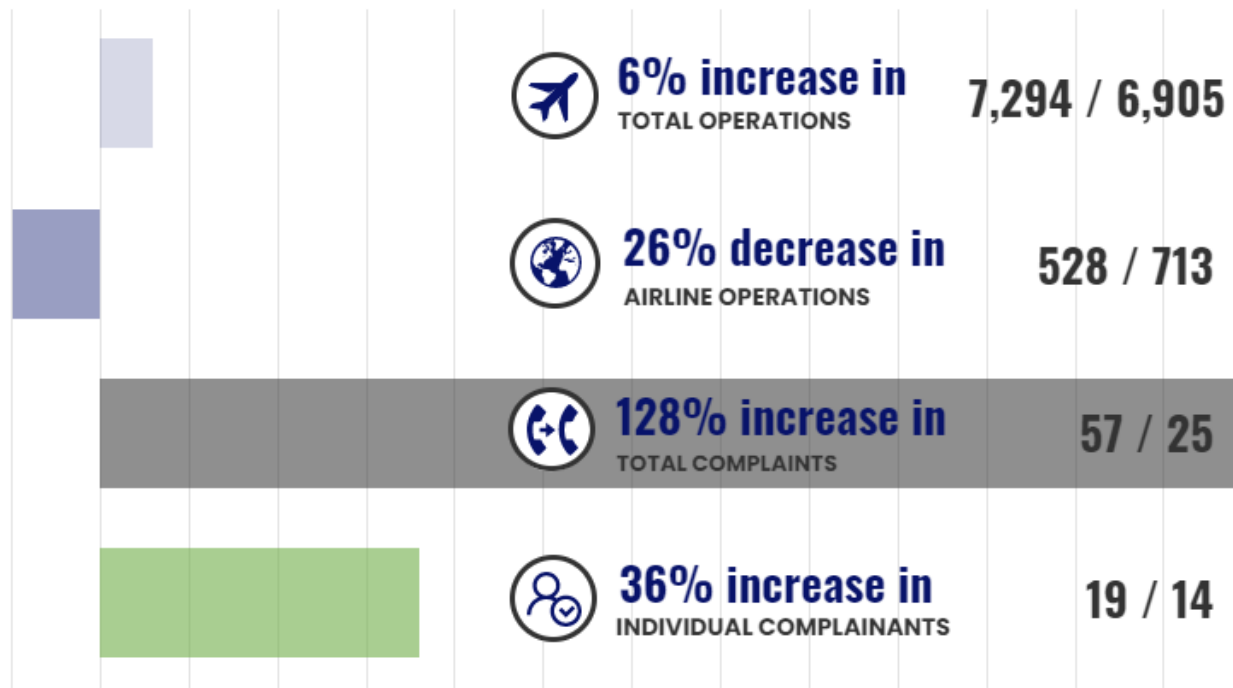
- 6 Complaints that were non-specific, were regarding operations that did not include STS as the origin or the destination, or were unable to be correlated to a flight track/aircraft



**An Operation is a departure from or an arrival to the Airport. Complaints may be correlated to more than one Operation or may not be correlated to an Operation.*

From September to October the number of complaints increased while the number of complainants decreased. The Airport still received far fewer complaints than during the summer months. In October, airline operations remained steady (528 in October compared to 513 in September) and total operations increased so that in October there were more operations than in October 2019. The majority of this increase was attributable to local operations, including several military operations. The Airport continued to see the majority of its noise complaints generated from the most active callers. In October, 32 of the 57 noise complaints received, or 56%, were received from two complainants who submitted 22 and 10 complaints each. As in September, the majority of complaints received were made by Windsor residents and were correlated to airline operations, mostly arrivals to Runway 14. The Airport also received several complaints in October from Cloverdale residents regarding operations out of the Cloverdale airport. These complaints largely accounted for the operations that were unable to be correlated to flight tracks.

What's Changed This Year? October 2020 vs. 2019



Airlines and Operators Identified Through Complaints



Alaska Airlines, American Airlines, and United Airlines operate jet aircraft. This graph does not include complaints which did not include an aircraft description and were unable to be correlated to a flight track/aircraft.

Aircraft Operated by Airlines at STS

Alaska Airlines
E175 (76 seats)



American Airlines
E175 (76 seats)



United Airlines
CRJ200 (50 seats)



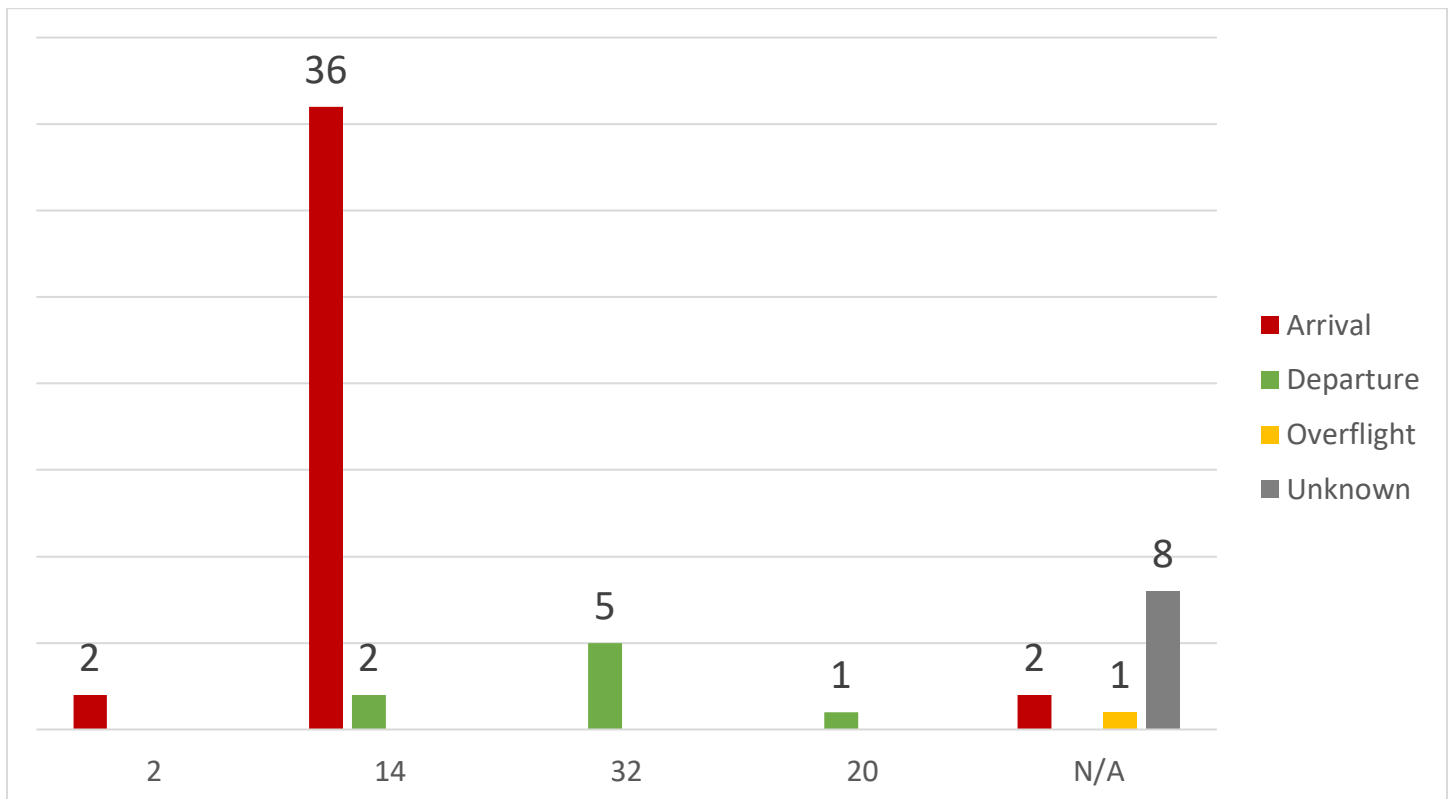
CRJ700 (65-76 seats)



CRJ900 (76-79 seats)



Identified Aircraft by Operation, Runway



Aircraft Altitudes

There were 47 aircraft with tracked altitudes identified through complaints made in October 2020. At the point of closest approach (PCA) to the complainant’s address, altitude was recorded (in feet).

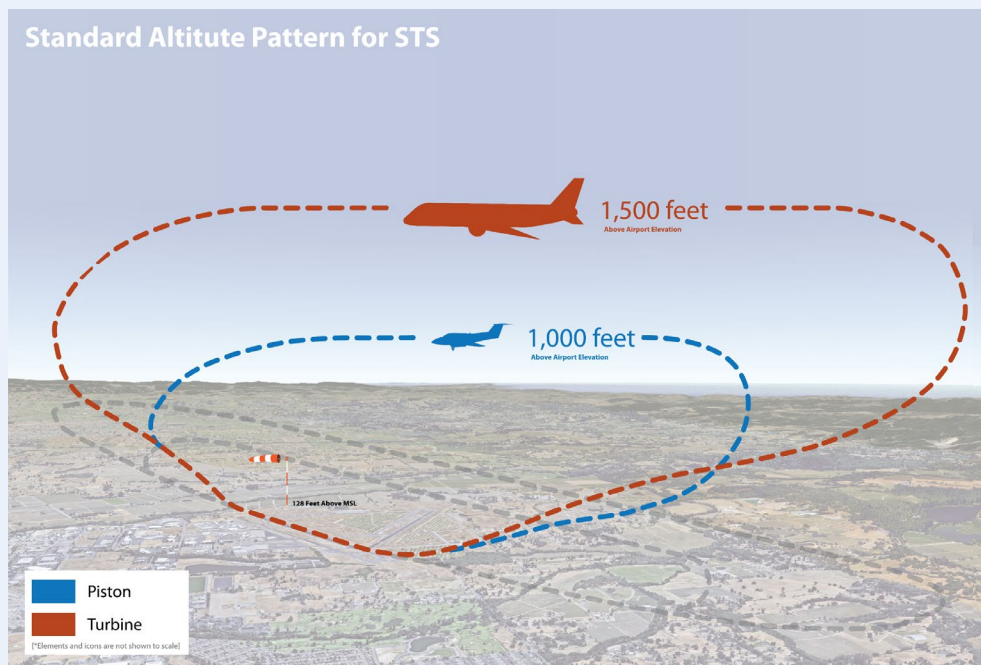


36% flying at an altitude over 1,000 feet

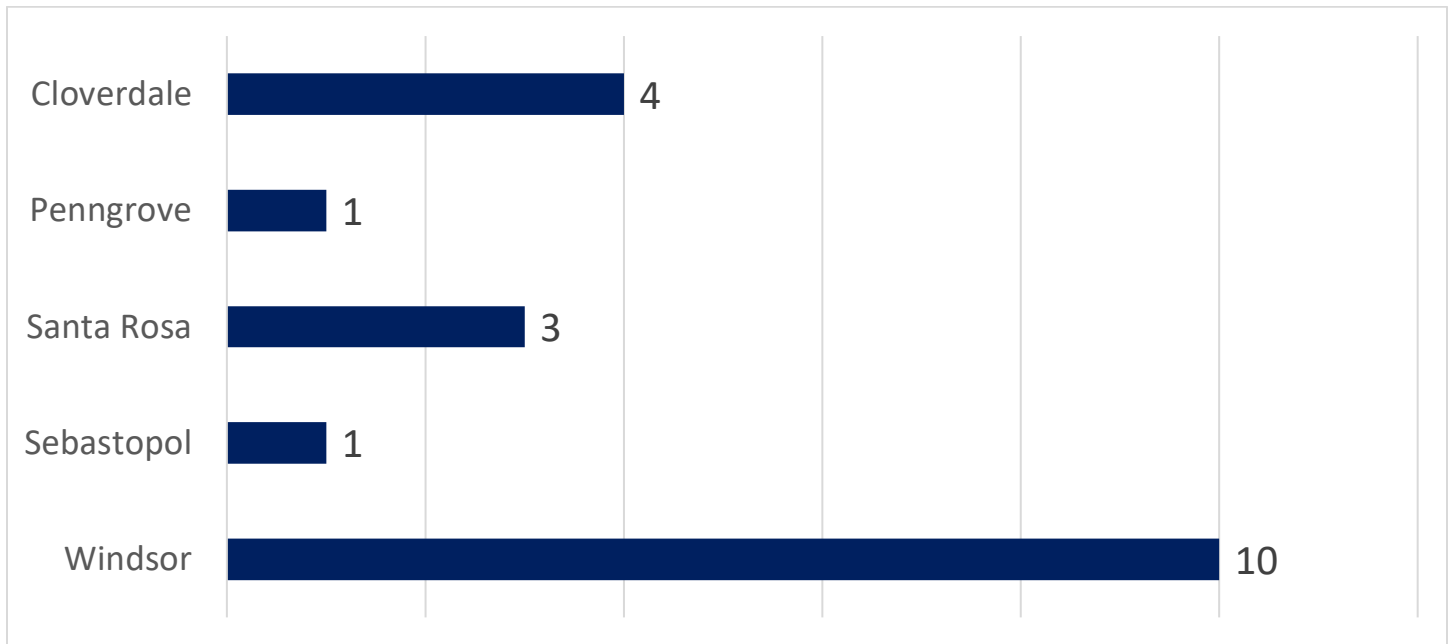
Recorded Altitude Range	Recorded Altitudes
Under 1,000 feet (30 aircraft)	640, 680, 755, 785, 795, 800, 800, 805, 810, 810, 820, 825, 830, 830, 835, 860, 870, 875, 890, 895, 900, 920, 925, 930, 935, 935, 950, 950, 965, 985
1,000 to 1,499 feet (6 aircraft)	1,025, 1,070, 1,120, 1,125, 1,420, 1,475
1,500 to 1,999 feet (8 aircraft)	1,505, 1,605, 1,635, 1,655, 1,770, 1,915, 1,930, 1,975
Over 2,000 feet (3 aircraft)	2,000, 2,525, 2,770

What are the altitude requirements for aircraft landing at or taking off from the Airport?

The Airport’s standard altitude pattern is the highest allowed by the FAA. Under FAA regulations, altitude restrictions are not applicable during landing and takeoff. The FAA has exclusive sovereignty of airspace in the United States (49 U.S.C. Section 40103(a)).



Originating Locations of Complaints

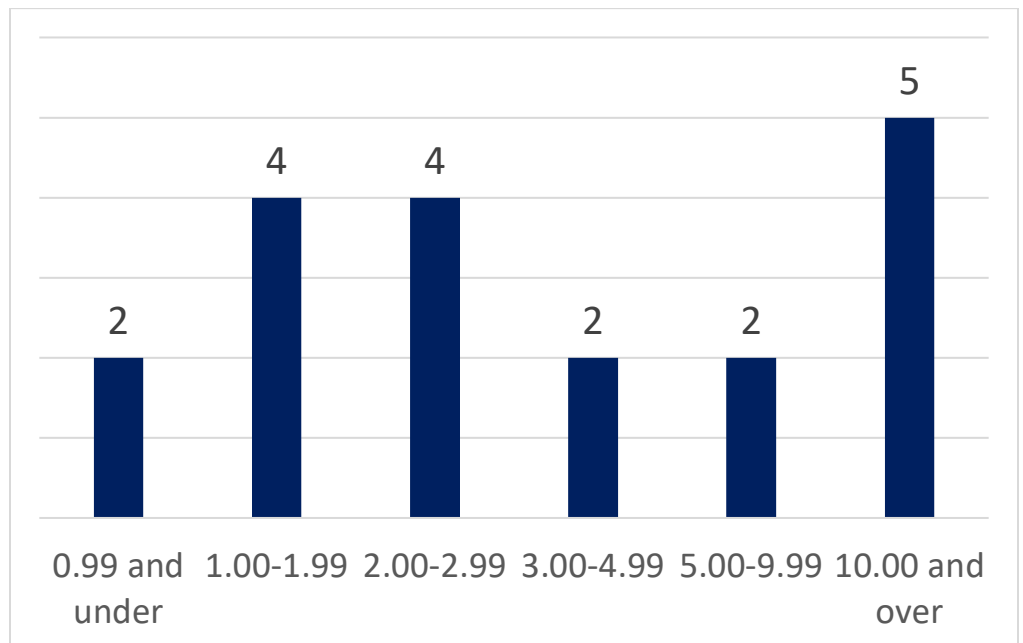


This graph reflects the locations of unique complainants this month.

Why are aircraft flying over my house?

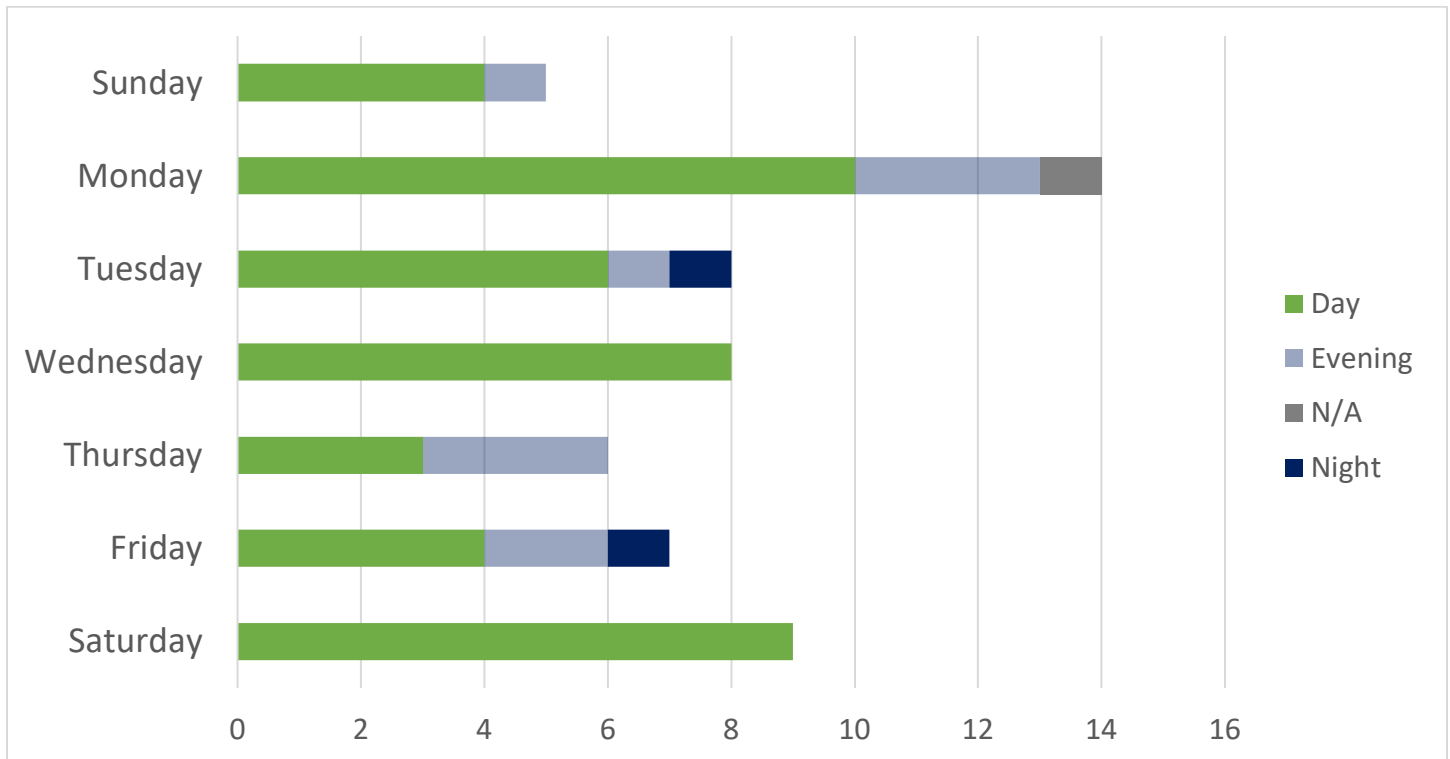
The FAA directs traffic into and out of the Airport. Flights are directed to the safest pattern depending on the amount of air traffic and prevailing winds at the time of arrival or departure. Safety is the FAA’s first consideration. However, aircraft can and do fly over all parts of Sonoma County. Sonoma County does not contain any No Fly Zones.

Distance of Originating Complaint Locations from STS (in nautical miles)



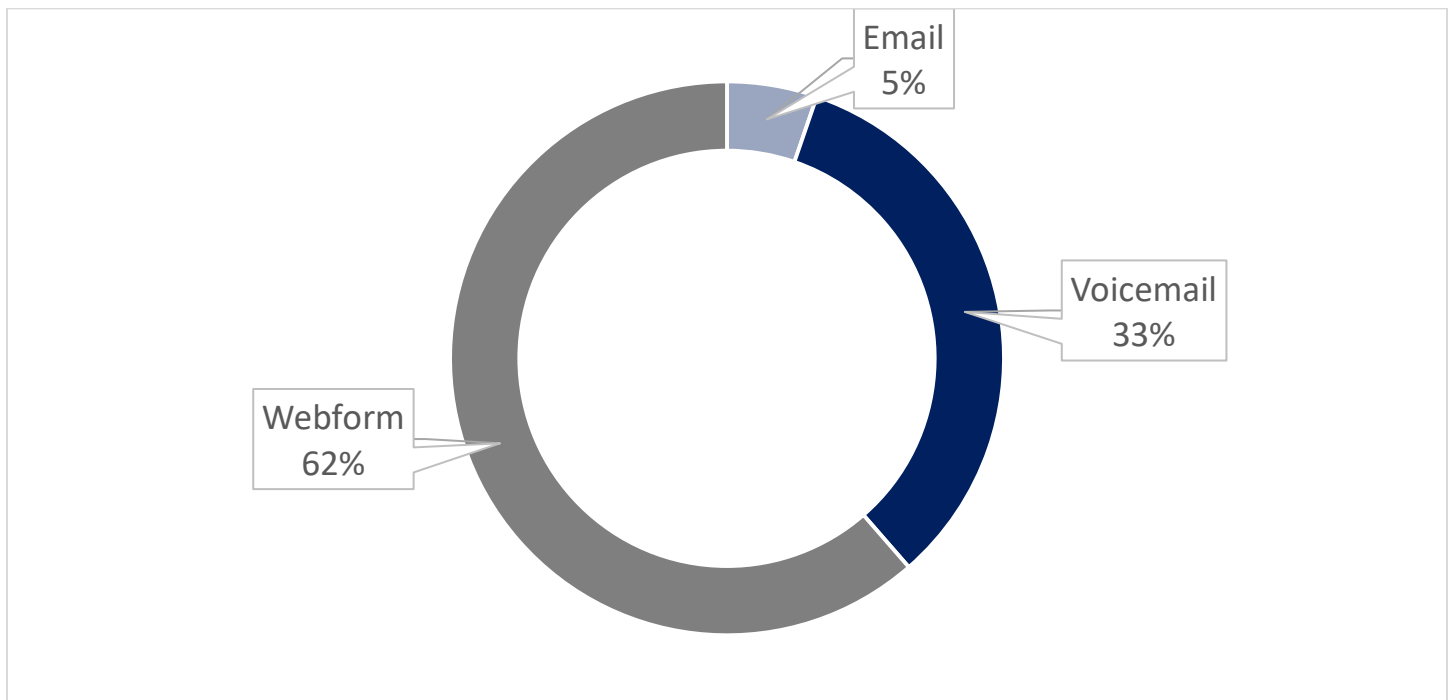
This graph reflects the distance between the Airport and the addresses of unique complainants who made complaints this month in nautical miles (NM).

Days and Times Complaints Were Generated



Day = 7:00 AM to 5:59 PM, evening = 6:00 PM to 9:59 PM, night = 10:00 PM to 6:59 AM.

Method by Which Complaints Were Received



Year-to-Date Operations and Complaints

Month	2020 Total Operations	2020 Airline Operations	2020 Complaints	2019 Total Operations	2019 Airline Operations	2019 Complaints
January	6,244	671	28	5,860	520	6
February	6,607	648	58	5,035	452	6
March	5,365	700	84	6,869	563	11
April	3,615	259	63	7,139	569	26
May	3,862	203	98	6,918	668	23
June	5,409	266	102	8,807	750	63
July	5,606	457	227	8,947	836	31
August	5,163	455	145	8,293	867	38
September	4,961	503	43	7,597	873	62
October	7,294	528	57	6,905	713	25
Totals	54,126	4,690	905	72,370	6,811	291

Year-to-Date Activities Identified Through Complaints*

Month	Alaska Airlines	American Airlines	United Airlines	Other Jet	Helicopter	Turboprop	General Aviation	Military
January	14	2	0	5	2	2	0	0
February	26	6	0	10	2	1	3	0
March	54	4	0	5	0	2	2	0
April	13	6	0	9	1	5	5	0
May	19	6	1	16	5	10	23	0
June	8	7	2	18	13	10	19	0
July	69	14	7	28	12	17	39	5
August	42	5	1	18	8	9	29	0
September	26	3	1	4	4	4	0	0
October	31	5	1	6	1	4	5	0
Totals	302	58	13	119	48	64	125	5

*Complaints may be correlated to more than one Operation (arrival or departure from the Airport) or may not be correlated to an Operation or aircraft.

Contact the Charles M. Schulz – Sonoma County Airport

To learn more about Noise Abatement at the Airport or submit a noise complaint:

<https://sonomacountyairport.org/business-and-community/aircraft-complaints-and-flight-traffic/>

Or call our hotline (707) 565-4515

Complaint submission tips:

Provide as much information as possible, including date, time, and, if possible, a description of the aircraft. Include the reason for your complaint.

To submit a general comment:

Visit <https://sonomacountyairport.org/about-sts/contact/>